

FOR LEASE - 8,424 SF

# Restaurant Pad - King of Prussia, PA

244 MALL BOULEVARD

RETAIL

## KING OF PRUSSIA MALL RING ROAD LOCATION



## CONTACT US

### David Orkin

Restaurant Practice Leader, Americas  
+1 215 322 8070  
david.orkin@cbre.com  
Licensed: MD, PA  
Licensed Salesperson: NJ

### John Krause

Senior Vice President  
+1 484 567 2830  
john.krause@cbre.com  
Licensed: PA  
Licensed Salesperson: NJ

### CBRE, Inc.

625 West Ridge Pike; Building A; Suite 100  
Conshohocken, PA 19428  
T +1 610 834 8000  
F +1 610 834 1793  
Licensed Real Estate Broker

DEMOGRAPHICS	1 Mile	3 Miles	5 Miles
Population (Est. 2018)	7,194	63,330	180,304
Median HH Income	\$88,341	\$82,343	\$83,558
Daytime Population	30,426	105,458	242,022

CBRE



FOR LEASE - 8,424 SF

# Restaurant Pad - King of Prussia, PA

244 MALL BOULEVARD

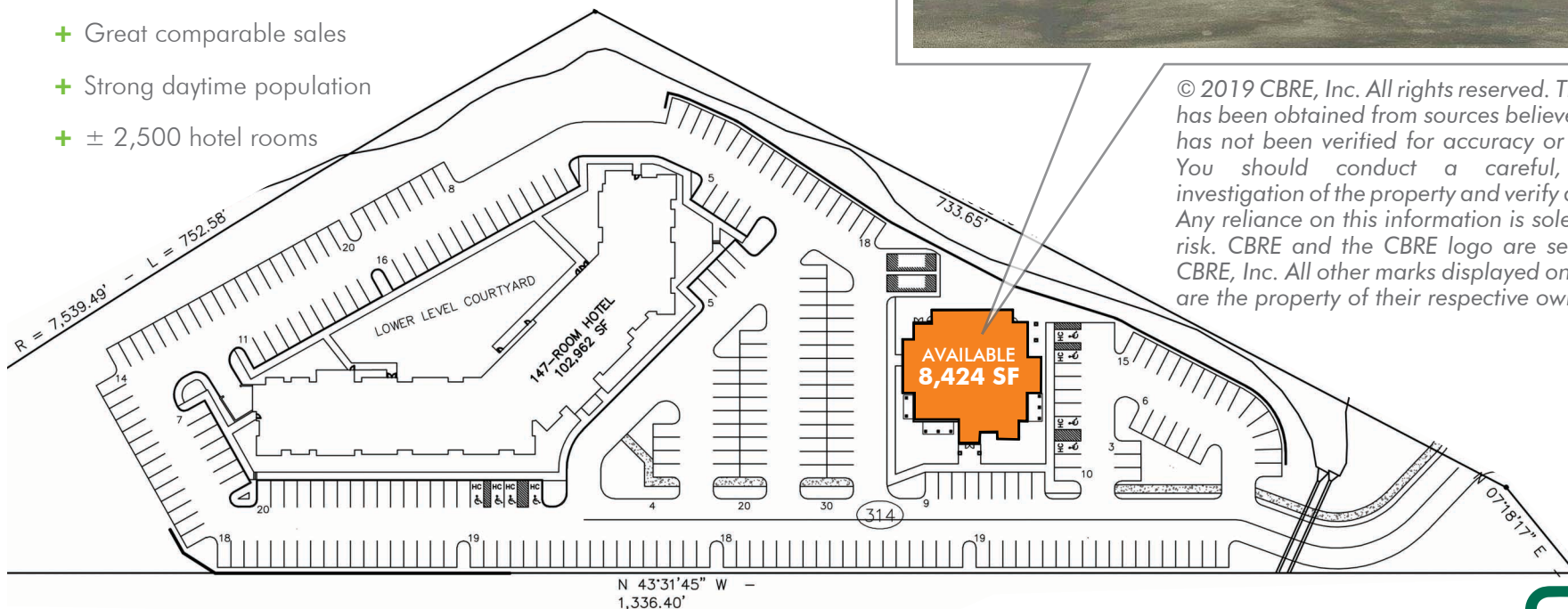
RETAIL

## JOIN NEIGHBORING RETAILERS



## PROPERTY FEATURES

- + Located on ring road of King of Prussia Mall
- + Excellent exposure and access to PA Turnpike (Route 276)
- + Great comparable sales
- + Strong daytime population
- + ± 2,500 hotel rooms



© 2019 CBRE, Inc. All rights reserved. This information has been obtained from sources believed reliable, but has not been verified for accuracy or completeness. You should conduct a careful, independent investigation of the property and verify all information. Any reliance on this information is solely at your own risk. CBRE and the CBRE logo are service marks of CBRE, Inc. All other marks displayed on this document are the property of their respective owners.

CBRE



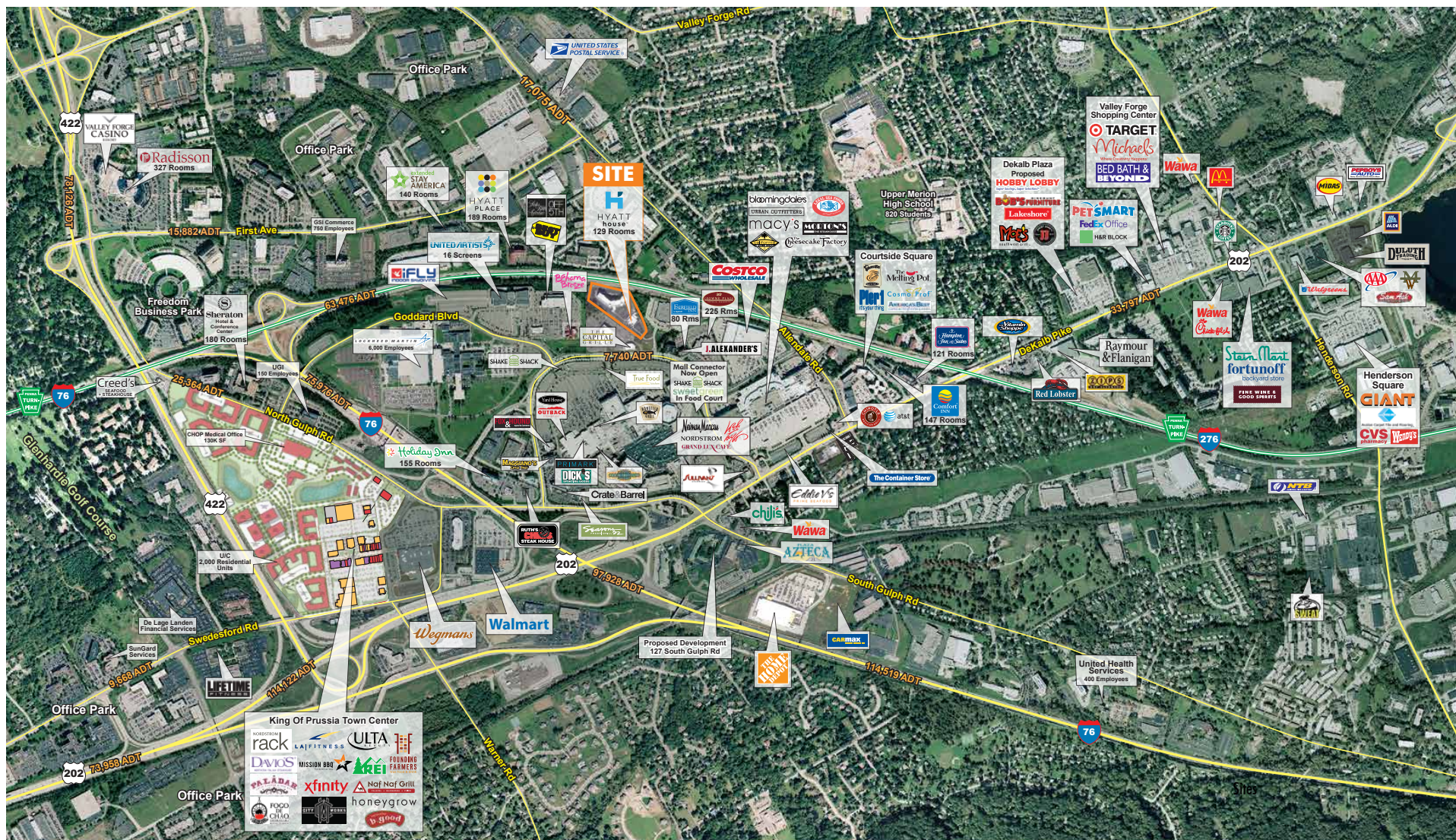
FOR LEASE - 8,424 SF

# Restaurant Pad - King of Prussia, PA

244 MALL BOULEVARD

MARKET AERIAL

RETAIL



CBRE