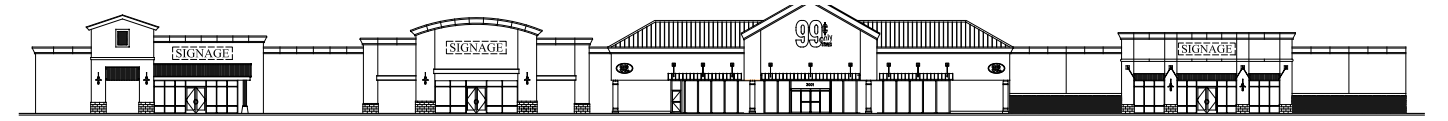


FOR LEASE

# Kmart Redevelopment

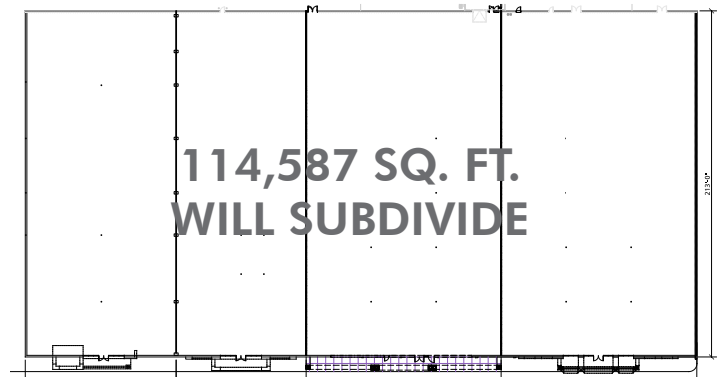
1287 WINCHESTER AVENUE | MARTINSBURG, WV 25405

RETAIL



## PROPERTY INFO

- + Former Kmart redevelopment in Martinsburg, West Virginia
- + 114,587 square feet available (will subdivide)
- + Excellent visibility from Route 45
- + Easy access from Interstate 81
- + Co-tenants include Shop 'n Save, Gabe's and CNB Bank with more coming soon
- + Area retailers include Lowe's Home Improvement, Olive Garden, Regal Cinemas, Walmart Supercenter, Bon-Ton, Chili's, Chick-fil-A, Dick's Sporting Goods, Best Buy, Target, Dollar Tree, Logan's Roadhouse, PetSmart, Advance Auto and many more



## 2017 Demographics

|                       | 5 miles  | 7 miles  | 10 miles |
|-----------------------|----------|----------|----------|
| Population            | 56,581   | 77,897   | 115,691  |
| Households            | 21,788   | 29,523   | 43,423   |
| Avg. Household Income | \$66,093 | \$67,153 | \$69,991 |
| Daytime Population    | 57,379   | 73,134   | 100,794  |

\* Pictures, elevation and site plan are samples of previous redevelopment projects. The actual project will vary.

FOR LEASE

# Kmart Redevelopment

1287 WINCHESTER AVENUE | MARTINSBURG, WV 25405

RETAIL



## CONTACT US

### Herky Pollock

Executive Vice President  
+1 412 394 9840  
herky.pollock@cbre.com

### Roger Gerst

Associate  
+1 202 609 6865  
roger.gerst@cbre.com

© 2018 CBRE, Inc. This information has been obtained from sources believed reliable. We have not verified it and make no guarantee, warranty or representation about it. Any projections, opinions, assumptions or estimates used are for example only and do not represent the current or future performance of the property. You and your advisors should conduct a careful, independent investigation of the property to determine to your satisfaction the suitability of the property for your needs. Photos herein are the property of their respective owners and use of these images without the express written consent of the owner is prohibited. CBRE and the CBRE logo are service marks of CBRE, Inc. and/or its affiliated or related companies in the United States and other countries. All other marks displayed on this document are the property of their respective owners.

[www.cbre.us/pittsburgh](http://www.cbre.us/pittsburgh)

**CBRE**