

# NORTH BETHESDA MARKET

rockville pike & executive blvd  
north bethesda, md

*8,903sf available*

## site details

- Former Brio space
- Premier retail center anchored by Whole Foods, Seasons 52, and LA Fitness
- Walking distance to the White Flint Metro
- Heavy lunch and dinner business in the surrounding market
- Free parking for the first 2 hours
- Signage facing Rockville Pike
- Large outdoor seating area
- 411 apartments at NOBE

## demographics

Metro Ridership - White Flint



3,786 Average Weekday  
Passenger Boardings

Walkscore®



85 - Very Walkable  
Most errands can be  
accomplished on foot

Daytime Population



1 mi	22,458
3 mi	123,634

Residential Population



1 mi	21,877
3 mi	156,012

Median Household Income



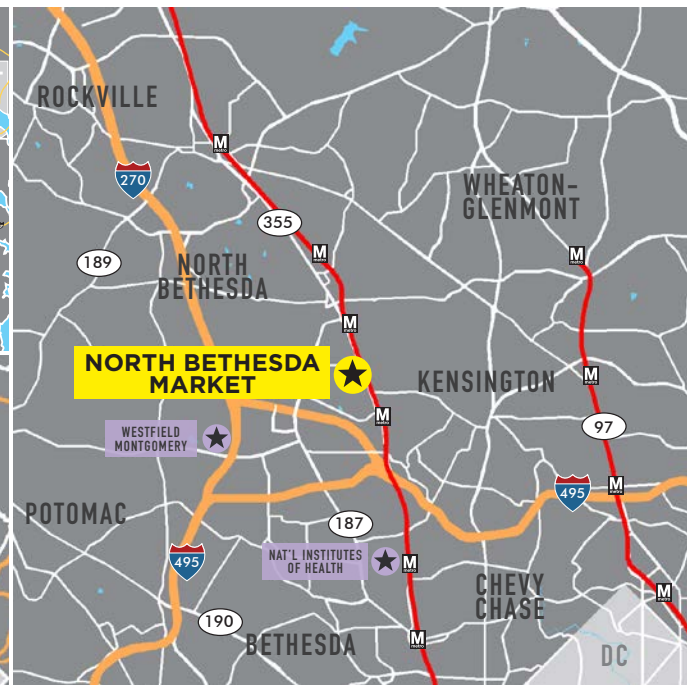
1 mi	\$106,496
3 mi	\$101,233

## contacts

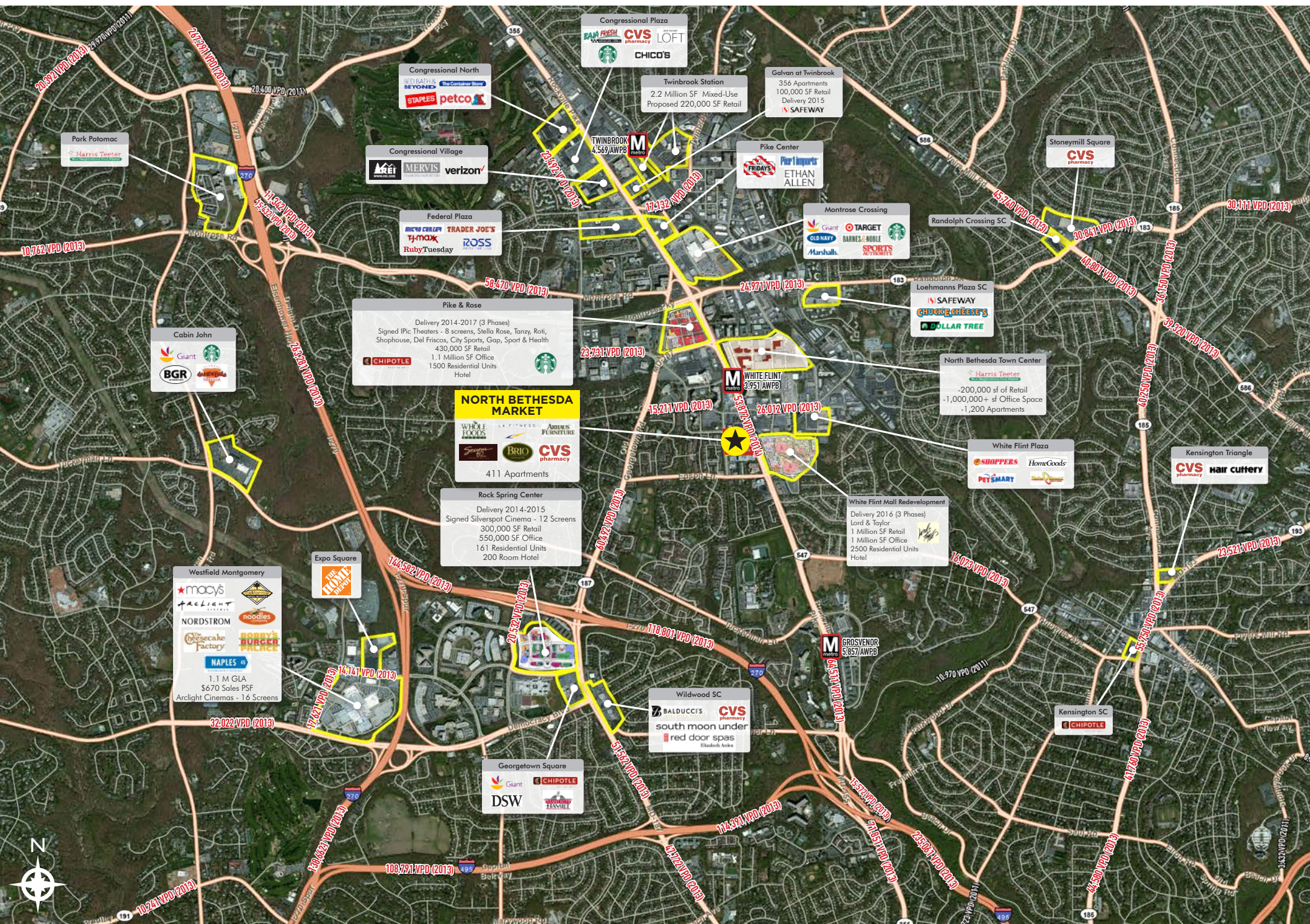
**rich amsellem**  
240.479.7216  
ramslem@streetsense.com



*53,872 vpd on rockville pike*

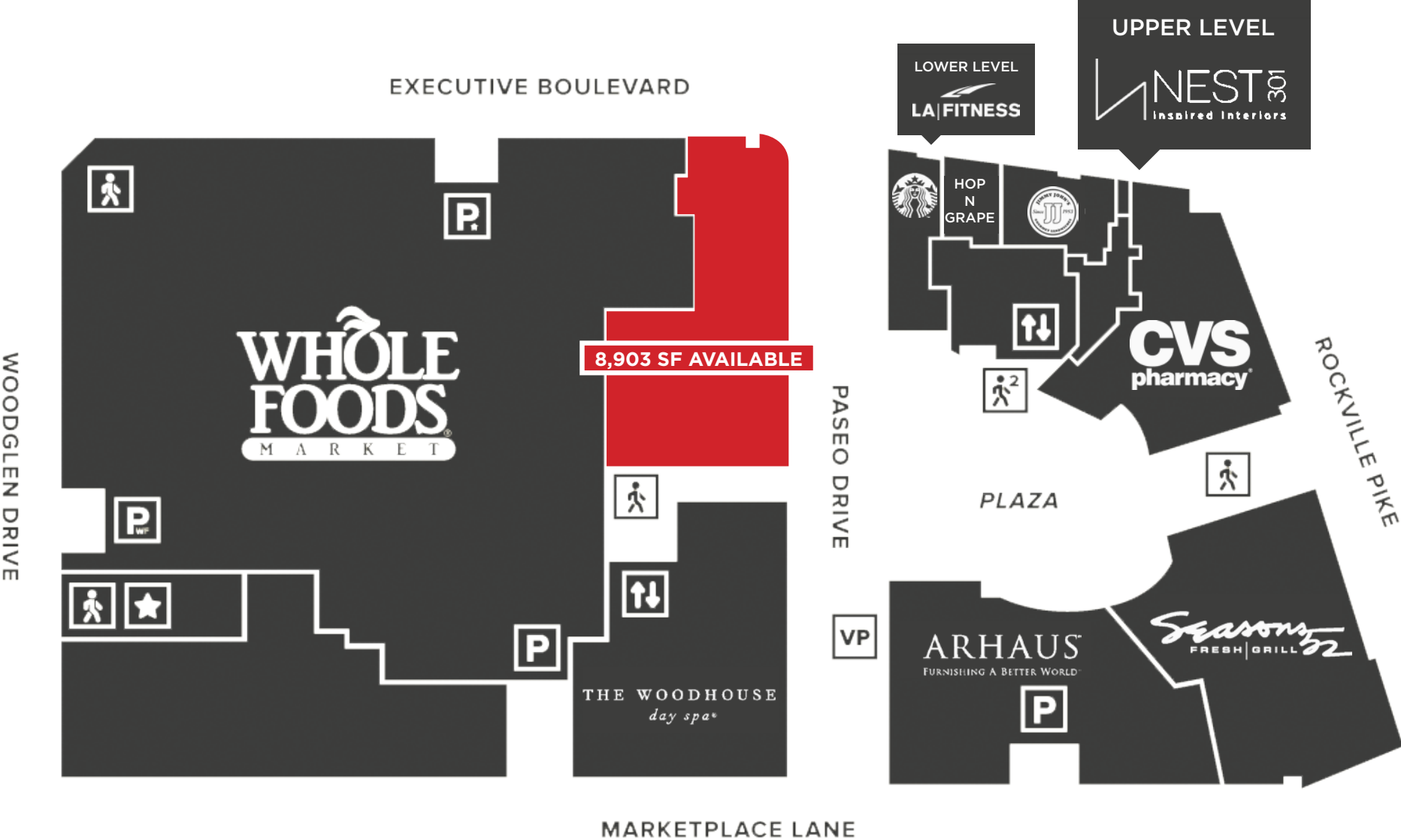




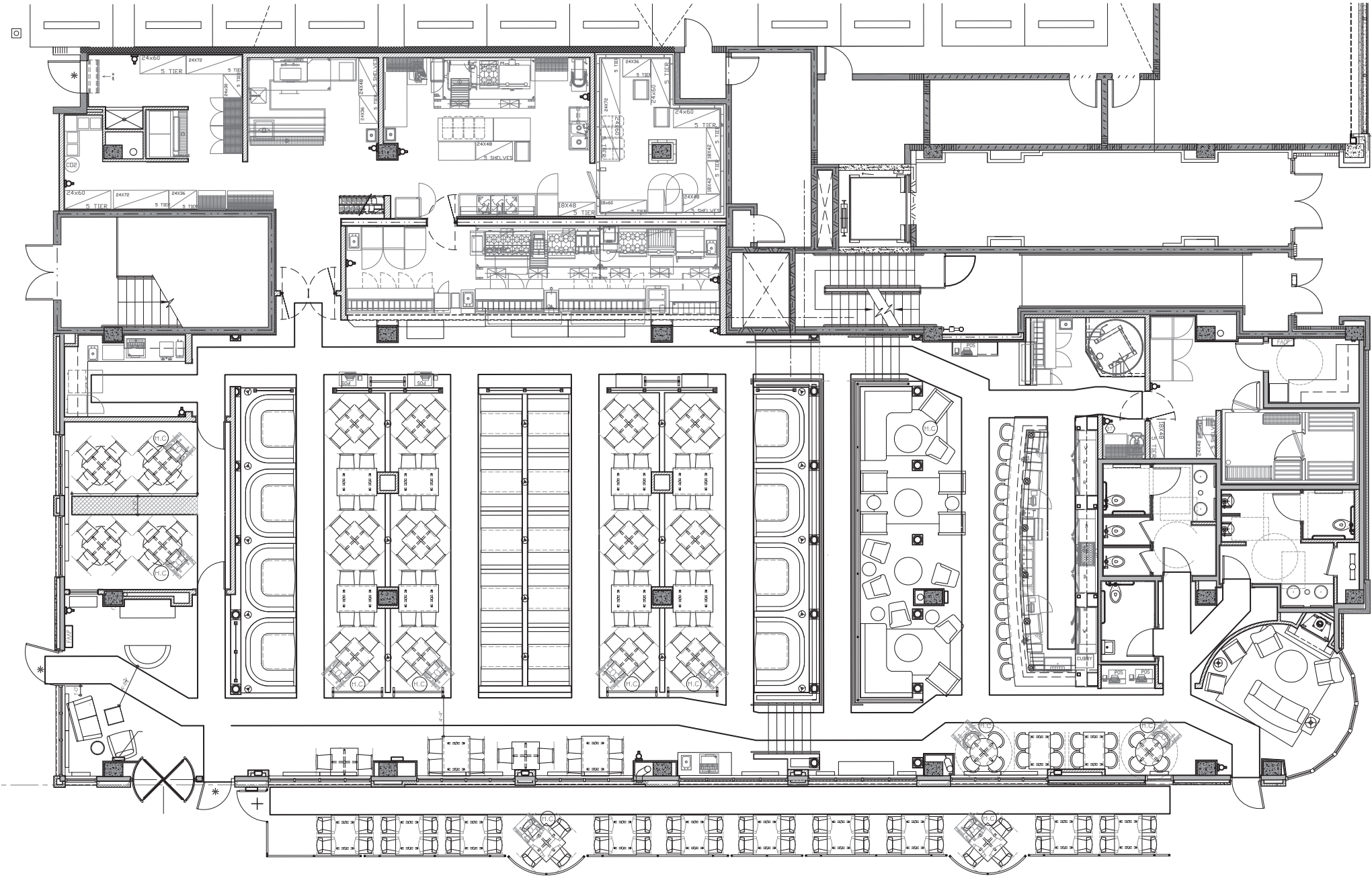




retail plan



space plan





# Exterior Photos



Outdoor Patio



Outdoor Patio



Plaza Entrance



Rockville Pike Signage