



15231

S U N S E T B L V D



Pacific Palisades

Ground Floor Retail
for Sublease



CBRE

15231 Sunset Blvd.

Rare vacancy In the heart of the charming Pacific Palisades retail corridor. This 1,875 SF ground floor space with 845 SF mezzanine is located directly adjacent to Caruso's Palisades Village, slated to open September 2018.



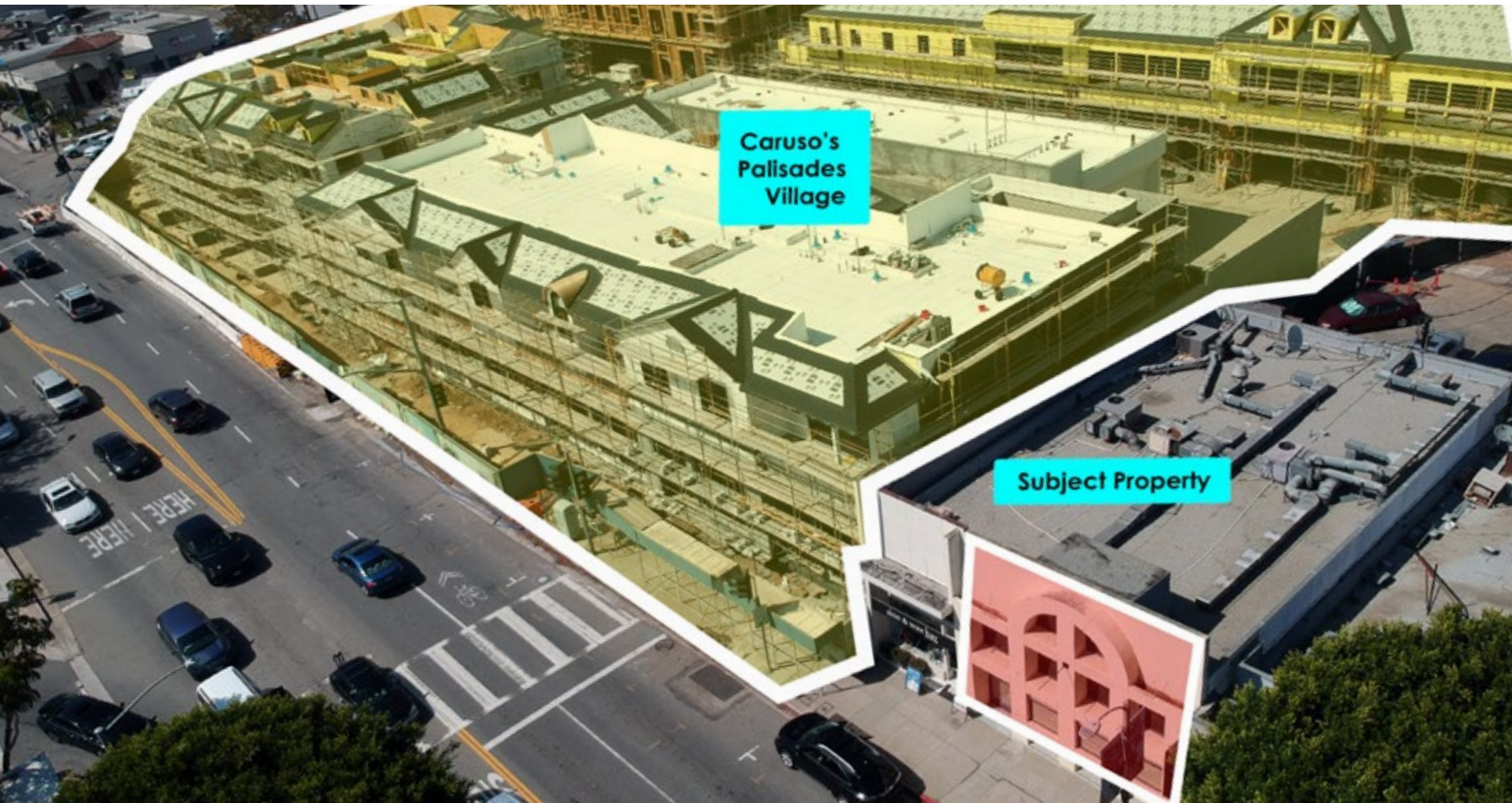
Ground floor retail space in the retail buidling directly adjacent to Caruso's new Palisades Village Shopping Center

Ground Floor

1,875 Sq. Ft

Mezzanine

845 Sq. Ft



Highlights



Prime retail corridor with 30 feet of frontage on Sunset



Adjacent to Caruso's new Palisades Village opens in September 2018

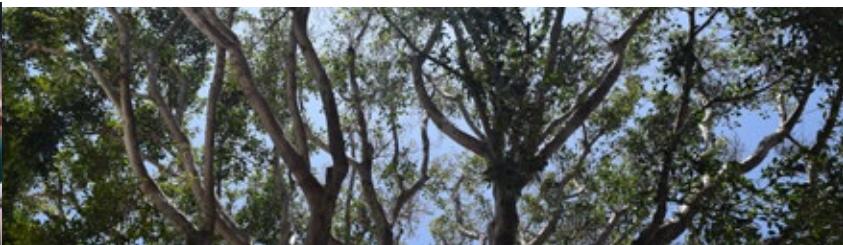


Sublease Until March 2021



4 Assigned Parking Spaces

Contact broker for additional details and to set up a tour.



Nearby retail, restaurant and service tenants

Bay Club	Marc Michel Eyewear
Beach House by Mikaila	Michele International
Cafe Vida	Norris Hardware
Chase Bank	Pearl Dragon
Club Pilates	Petit Ami
Comfort Massage	Pharmaca
Dry Bar	Ralphs
Elyse Walker	SKIN x FIVE
Gelsons Super Market	Studio K Training
	Vivian's Botique



Directly Adjacent To Palisades Village

Scheduled to open
September 2018.

This 125,000 SF retail destination, with a grocer, movie theater, five restaurants, studio fitness, and boutique retail, is expected to be a huge draw for the Pacific Palisades.

Signed Tenants at Palisades Village

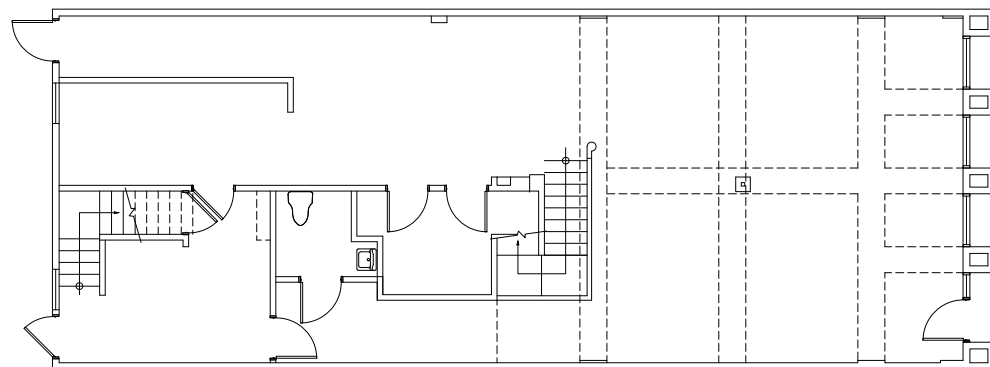
ALC	Marysia
Amazon Books	Max-bone
Bay Theatre by Cinépolis Luxury	McConnell's Fine Ice Creams
Cinemas	Miller's Oath
Botanica Bazaar	SunLife Organics
Carbon38	Sweet Laurel Bakery
edo little bites	The Little Market
FdeiM by Madeo	TOWNE by Elyse Walker
General Porpoise	Vintage Grocers
Jennifer Meyer	Zimmermann
Madeo Restaurant	



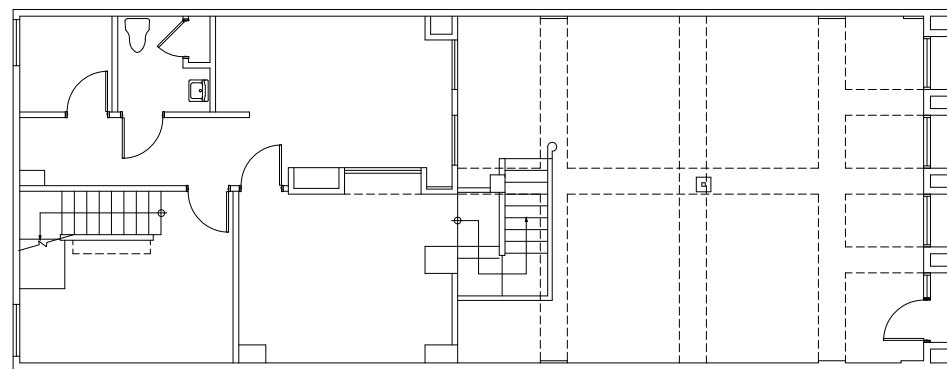
Floor Plan

GROUND FLOOR - 1,875 SF
MEZZANINE - 845 SF

1 EXISTING FIRST FLOOR PLAN
SCALE: 1/8" = 1'-0"
0 4 FT 8 FT



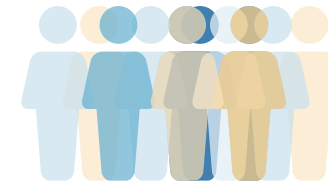
1 EXISTING SECOND FLOOR PLAN
SCALE: 1/8" = 1'-0"
0 4 FT 8 FT



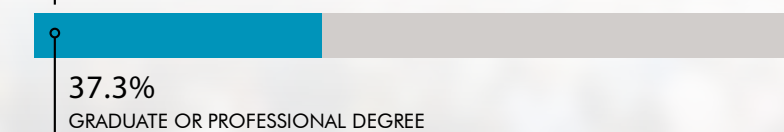
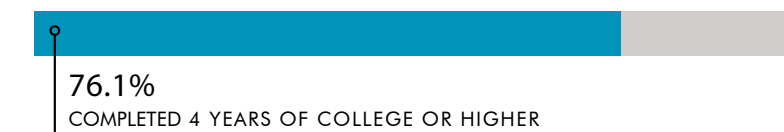
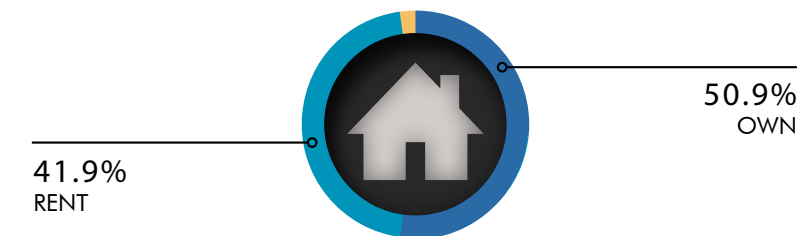
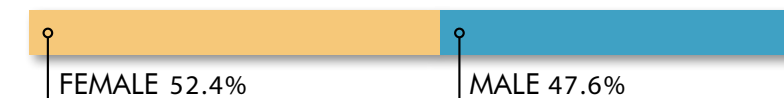
Demographics

PACIFIC PALISADES

57,524
RESIDENTS



47.7
MEDIAN AGE



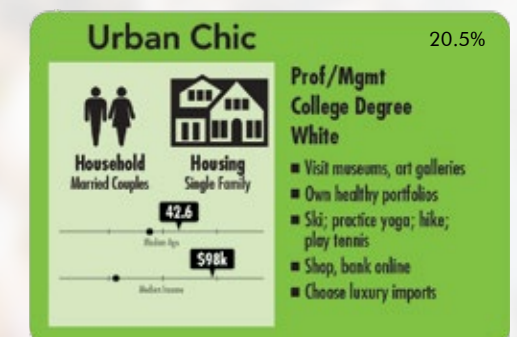
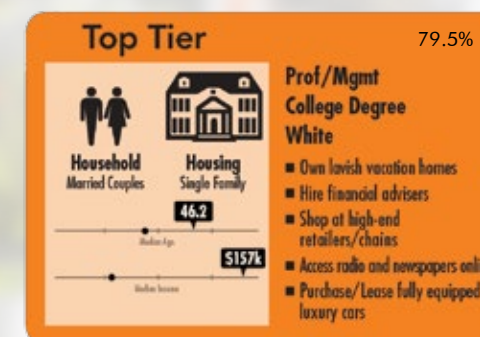
\$198_K

average household income

\$2.6_{MM}

average home value

TOP DEMOGRAPHIC GROUPS





Contacts

ZACHARY CARD

Lic. 01717802

+1 310 550 2542

zachary.card@cbre.com

ERIK KRASNEY

Lic. 01970585

+1 310 550 2680

erik.krasney@cbre.com

CBRE

CBRE, INC

Broker Lic. 00409987

© 2017 CBRE, Inc. All rights reserved. This information has been obtained from sources believed reliable, but has not been verified for accuracy or completeness. Any projections, opinions, or estimates are subject to uncertainty. The information may not represent the current or future performance of the property. You and your advisors should conduct a careful, independent investigation of the property and verify all information. Any reliance on this information is solely at your own risk. CBRE and the CBRE logo are service marks of CBRE, Inc. and/or its affiliated or related companies in the United States and other countries. All other marks displayed on this document are the property of their respective owners. Photos herein are the property of their respective owners and use of these images without the express written consent of the owner is prohibited.

