

# 143 FULTON STREET

Across from the Fulton  
Street Transit Center

## Downtown Gym

### SPACE A

#### PREMISES

Ground Floor: 3,652 SF

### SPACE B

#### PREMISES

Ground Floor: 570 SF

Second Floor: 4,222 SF

### DETAILS

#### CEILING HEIGHT

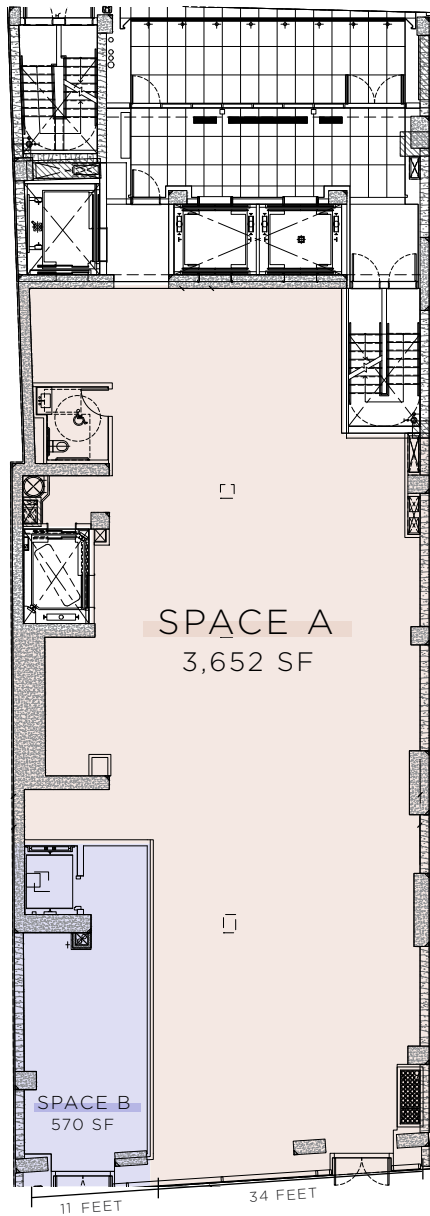
Ground Floor: 18 Feet, 9 Inches

Second Floor: 18 Feet, 11 Inches

POSSESSION: Immediate

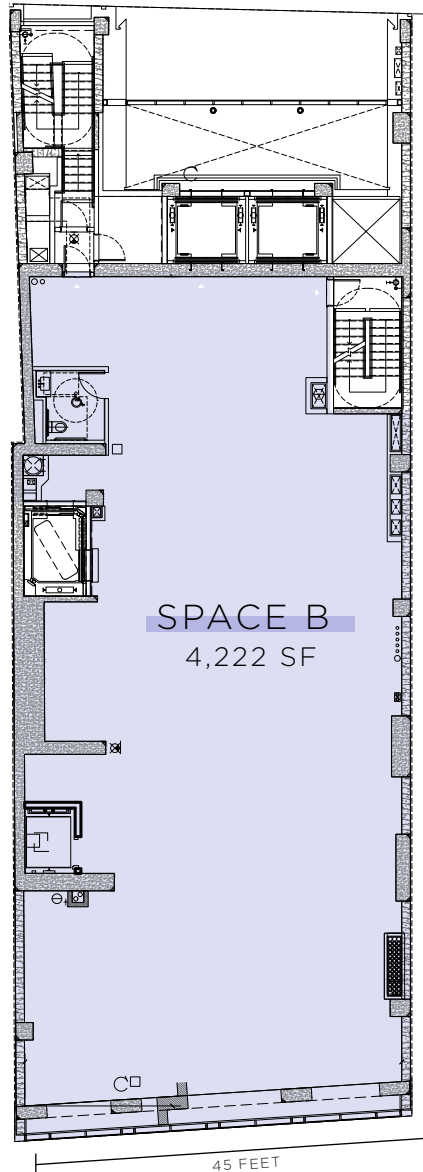
TERM: Long Term

GROUND FLOOR



Fulton Street

SECOND FLOOR



Fulton Street

## NEIGHBORS

Fulton Street Transit Center, World Trade Center, Brookfield Place, South Street Seaport, Chick Fil A, Shake Shack, Taco Dumbo, Nobu, Anthropologie, Zara, Urban Outfitters, Chipotle, Starbucks, Century 21, The Beekman Hotel, Four Seasons Hotel

## UNPARALLELED EXPOSURE

At the base of the Moxy Downtown NYC Hotel.

Venting possible.

Spaces can be combined.

24/7 location - surrounded by:

Over 90M square feet of office space and 300,000 employees.

33,000 existing residential units with more than 2,300 expected in 2020 and beyond.

7,600 hotel rooms across 35 hotels, with another 1,500 rooms in development.

Across from Fulton Street Transit Center, home to **A C J Z 2 3 4 5** trains with over 27,000,000 riders per year.

Steps from the World Trade Center, the number one tourist destination in New York City.



# 143 FULTON STREET

PRESTON E. CANNON  
212 - 984 - 6544  
[preston.cannon@cbre.com](mailto:preston.cannon@cbre.com)

MATTHEW CHMIELECKI  
212 - 984 - 6698  
[matt.chmielecki@cbre.com](mailto:matt.chmielecki@cbre.com)

JEWELLES COSCULLUELA  
212 - 895-0923  
[jewelles.cosculluela@cbre.com](mailto:jewelles.cosculluela@cbre.com)

Fulton  
Transit Center



**CBRE**

© 2019 CBRE, Inc. All rights reserved. This information has been obtained from sources believed reliable, but has not been verified for accuracy or completeness. You should conduct a careful, independent investigation of the property and verify all information. Any reliance on this information is solely at your own risk. CBRE and the CBRE logo are service marks of CBRE, Inc. All other marks displayed on this document are the property of their respective owners, and the use of such logos does not imply any affiliation with or endorsement of CBRE.