

470 BROADWAY

BETWEEN GRAND & BROOME STREETS



CBRE

PREMISES

Ground - 3,342 SF

2nd Fl. - 3,342 SF

Lower - 3,509 SF

FRONTAGE

33 Feet

AVAILABLE

Upon 90 days notice

COMMENTS

- Fabulous double height frontage
- Fantastic new build-out
- Flagship opportunity

NEIGHBORS

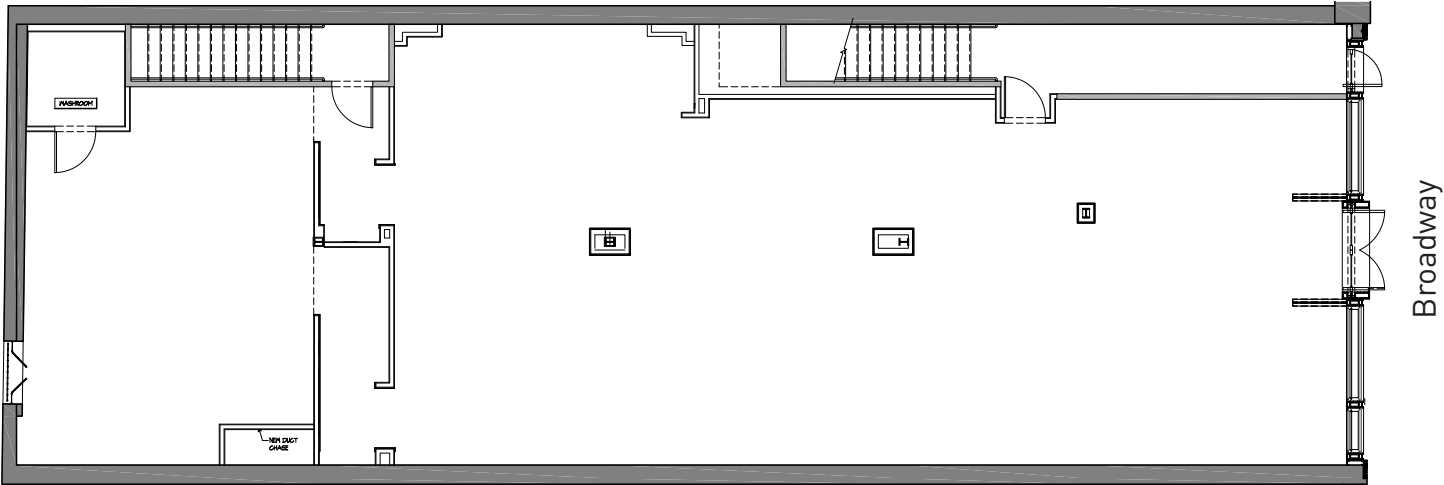
Located in the heart of SoHo's bustling residential and office market, neighbors include:

Bloomingdales, Nike, J Crew, Madewell, Rituals, Brandy Melville, Lululemon, Sabon and Topshop.

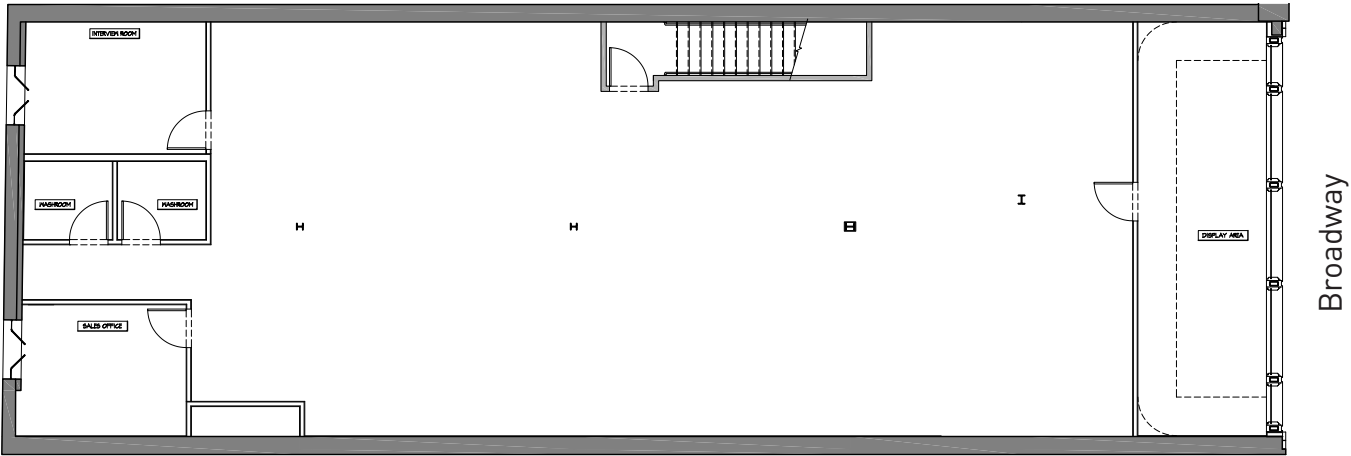


FLOOR PLANS
CLICK TO DOWNLOAD

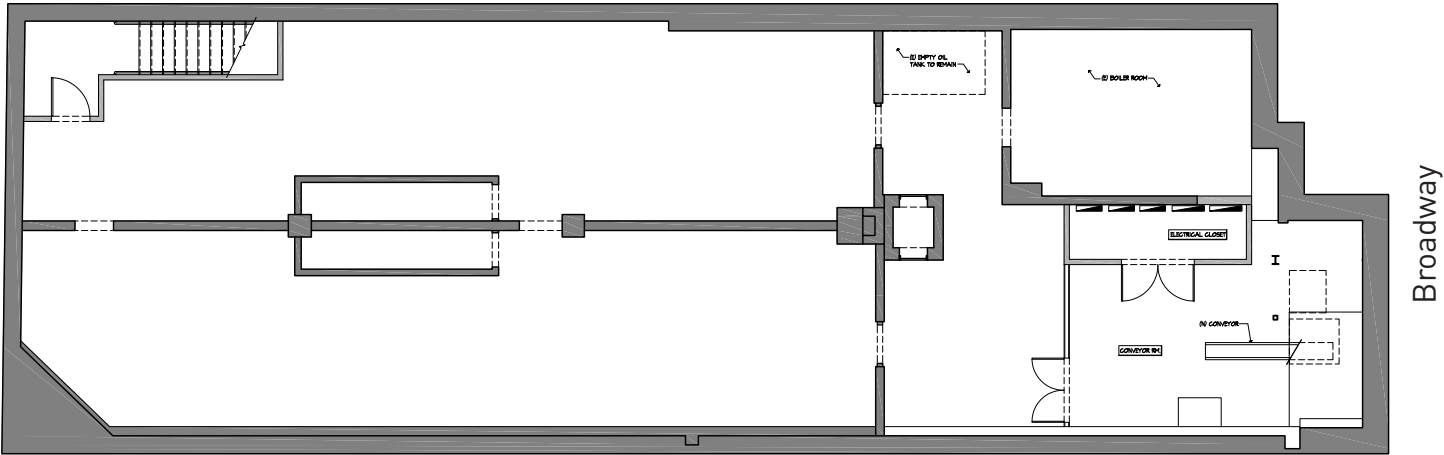
GROUND - 3,342 SF



2ND FL. - 3,342 SF



LOWER - 3,509 SF



470 BROADWAY

BETWEEN GRAND & BROOME STREETS

AMIRA YUNIS

+1 212 984 8126

amira.yunis@cbre.com

ANTHONY STANFORD

+1 212 895 0910

anthony.stanford@cbre.com

ELLIOT FERRIS

+1 212 984 8326

elliott.ferris@cbre.com

CBRE

