

575

MADISON

BETWEEN EAST 56<sup>TH</sup> & 57<sup>TH</sup> STREETS

LUSTRE

SAVOIR

BREITLING  
1884

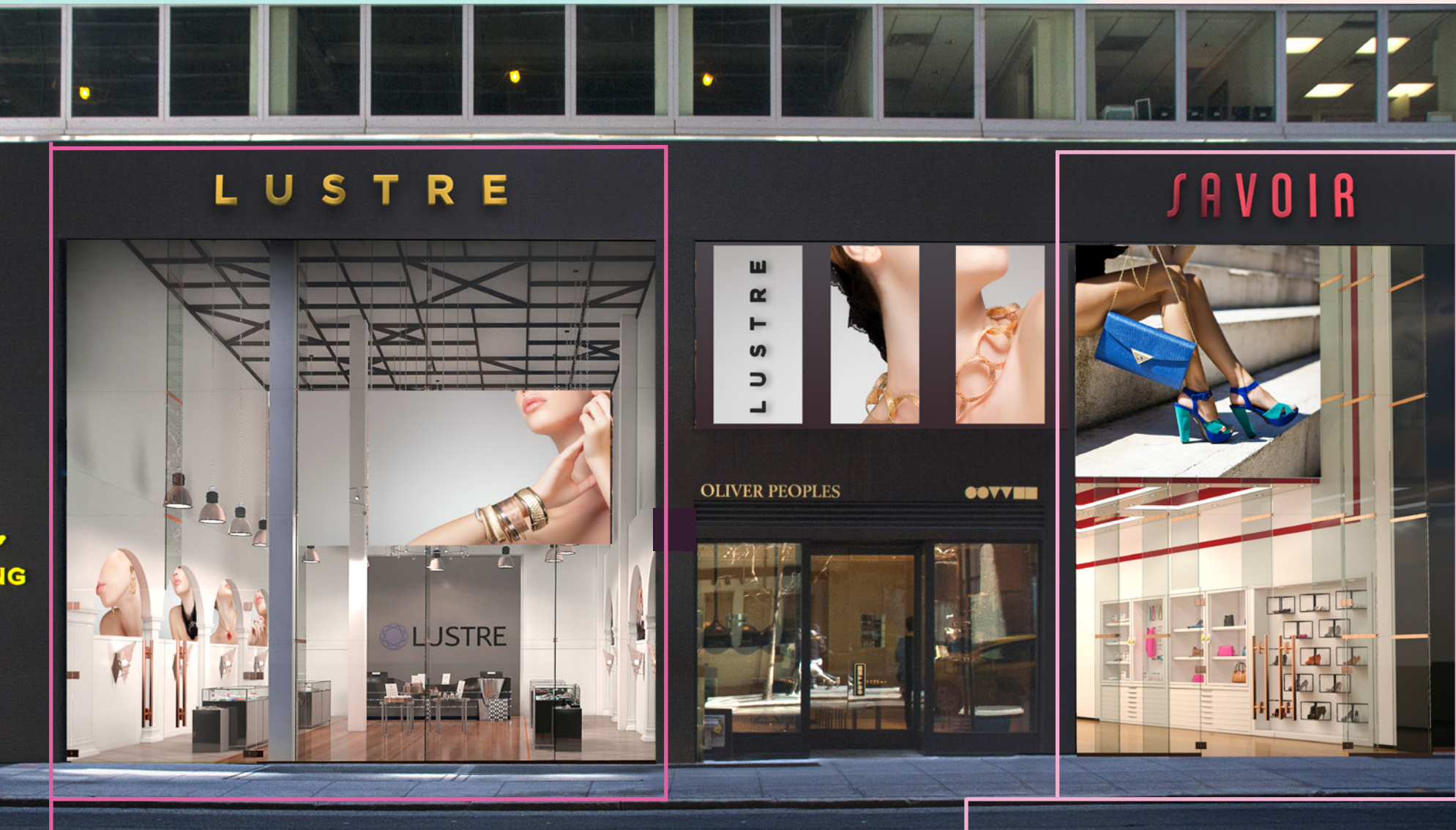
LUSTRE

OLIVER PEOPLES

COVER

CBRE





575  
MADISON

### SPACE A | LUSTRE

Ground Floor: 1,500 square feet  
Lower Level: Up to 2,000 square feet  
Frontage: 30' feet

\*Elevator and dumbwaiter within space

### SPACE B | SAVOIR

Ground Floor: 700 square feet  
Frontage: 20' feet

\*Some remote storage available

### CEILING HEIGHTS

Ground Floor - Up to 24' feet  
Lower Level - 13' feet

### ASKING

Upon request

### POSSESSION

Arranged

### TERM

Long term

### SPECS

Unique ability to design your own double-height storefront with unique branding signage

57TH STREET

**LEASED**  
Luxury Tenant to be  
announced soon

BREITLING  
FLAGSHIP

**SPACE A**  
Ground 1,500 SF

OLIVER  
PEOPLES

**SPACE B**  
Ground 700 SF

UNPARALLELED FOOT TRAFFIC AND  
UNMATCHED VISIBILITY ON  
MADISON AVENUE

### COMMENTS:

- Premium flagship opportunity with strong luxury co-tenancy within the building
- High visibility from both Madison Avenue and 57th Street
- Steps away from world class retailers such as Balenciaga, Breitling, Celine, Moncler and Richard Mille amongst others
- Building is undergoing a complete renovation of the office lobby and façade of the building's lobby entrance
- Double height frontage opportunity

MADISON AVENUE

30'

20'

36'



# 575 MADISON

**AMIRA YUNIS**  
212.984.8126  
amira.yunis@cbre.com

**ANTHONY STANFORD**  
212.895.0910  
anthony.stanford@cbre.com

**ELLIOT FERRIS**  
212.984.8326  
elliott.ferris@cbre.com

**CBRE**

© 2019 CBRE, Inc. All rights reserved. This information has been obtained from sources believed reliable, but has not been verified for accuracy or completeness. You should conduct a careful, independent investigation of the property and verify all information. Any reliance on this information is solely at your own risk. CBRE and the CBRE logo are service marks of CBRE, Inc. All other marks displayed on this document are the property of their respective owners, and the use of such logos does not imply any affiliation with or endorsement of CBRE.

CENTRAL  
PARK

THE PLAZA  
NEW YORK

BERGDORF  
GOODMAN

Van Cleef & Arpels

BVLGARI

FIFTH AVENUE

62<sup>ND</sup> STREET

61<sup>ST</sup> STREET

60<sup>TH</sup> STREET

59<sup>TH</sup> STREET

58<sup>TH</sup> STREET

57<sup>TH</sup> STREET

56<sup>TH</sup> STREET

HERMES  
PARIS

RALPH & RUSSO

Prioni

TOM FORD

BARNEYS  
NEW YORK

JIMMY CHOO  
HERMES  
PARIS

BALLY

BRUNELLO CUCINELLI

BERLUTI

SCHUTZ

MARC JACOBS

Baccarat  
MOLTON BROWN

DIESEL  
STUART  
WEITZMAN  
CANALI

FRATELLI  
ROSSETTI

LAVO

DECIEM  
SERMONETA  
GLOVES  
LALIQUE

COACH FOUR SEASONS

ZILLI AUDEMARS PIGUET  
Le Brassus

BREITLING  
1884

SPACE A

OLIVER PEOPLES  
COTY

SPACE B

LACOSTE

LUXURY TENANT  
TO BE  
ANNOUNCED  
SOON

GIORGIO ARMANI

AMAFFI

RICHARD  
MILLE

JACOB & CO.

TOURNEAU

Bonhams

ATRIUM

OBICA

Museum of Modern Art

TIFFANY & CO.