

2.2 ACRES FOR SALE OR BUILD-TO-SUIT

Duluth Trading Co. Outlot

5190 HOFFMAN BOULEVARD, HOFFMAN ESTATES, IL 60192

RETAIL



PROPERTY INFO

- + 2.2 Acre Site - Opportunity to purchase or Build-To-Suit, adjacent to Duluth Trading Company
- + Adjacent to Cabela's with over 1,000,000 visitors per year in its 180,000 SF store
- + Over 1,000,000 SF retail within 2 miles of site with a full service Marriott with conference, fine dining and 295 room accommodations
- + Site located just off I-90 interchanges in Prairie Stone Business Park, a 780 acres master planned business park including 100 acres of grasslands and nature trails
- + Location is 20 minutes from O'Hare, 10 minutes from Schaumburg
- + Business Park includes 100,000 SF Prairie Stone Sports & Wellness Center
- + Sears Arena sports and entertainment venue with 11,000 seats and 750,000 visitors annually

CONTACT US

Marcy Wood

Vice President
+1 630 573 1287
marcy.wood@cbre.com

www.cbre.us/duluthoutlot



2.2 ACRES FOR SALE OR BUILD-TO-SUIT

Duluth Trading Co. Outlot

5190 HOFFMAN BOULEVARD, HOFFMAN ESTATES, IL 60192

RETAIL



CONTACT US

Marcy Wood

Vice President
+1 630 573 1287
marcy.wood@cbre.com

www.cbre.us/duluthoutlot

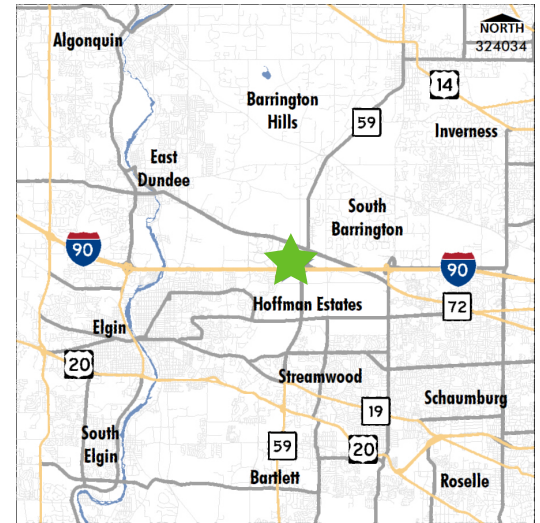
CBRE

2.2 ACRES FOR SALE OR BUILD-TO-SUIT

Duluth Trading Co. Outlot

5190 HOFFMAN BOULEVARD, HOFFMAN ESTATES, IL 60192

RETAIL



2018 Demographics

	2 Mile	3 Mile	5 Mile	10 Miles
Population	7,625	33,028	178,199	667,920
Households	2,471	10,864	58,697	234,461
Avg HH Income	\$146,994	\$119,308	\$91,759	\$107,798
Daytime Population	29,347	47,086	170,446	642,018

CONTACT US

Marcy Wood

Vice President
+1 630 573 1287
marcy.wood@cbre.com

© 2018 CBRE, Inc. All rights reserved. This information has been obtained from sources believed reliable, but has not been verified for accuracy or completeness. You should conduct a careful, independent investigation of the property and verify all information. Any reliance on this information is solely at your own risk.

www.cbre.us/duluthoutlot

CBRE

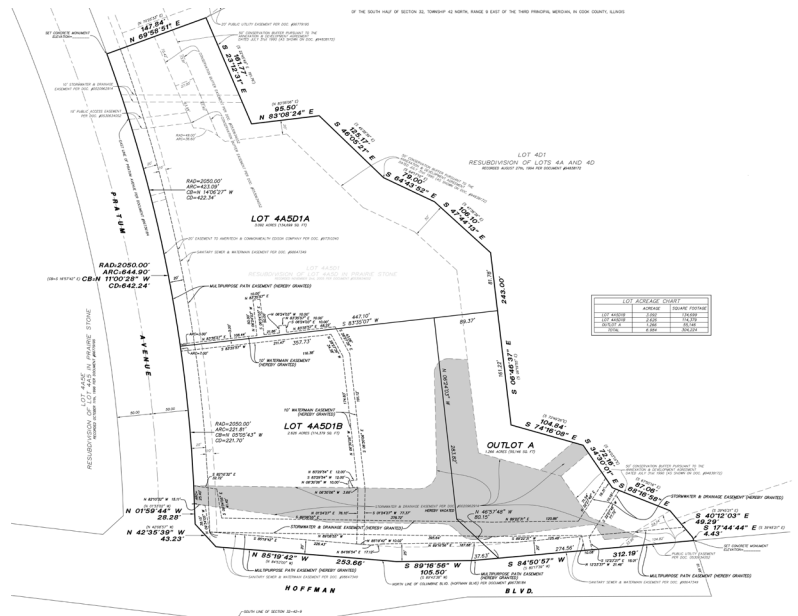
2.2 ACRES FOR SALE OR BUILD-TO-SUIT

Duluth Trading Co. Outlot

5190 HOFFMAN BOULEVARD, HOFFMAN ESTATES, IL 60192

RETAIL

SITE PLAN AND SURVEY



CONTACT US

Marcy Wood

Vice President

+1 630 573 1287


marcy.wood@cbre.com


© 2018 CBRE, Inc. All rights reserved. This information has been obtained from sources believed reliable, but has not been verified for accuracy or completeness. You should conduct a careful, independent investigation of the property and verify all information. Any reliance on this information is solely at your own risk.


www.cbre.us/duluthoutlot


CBRE

5190 HOFFMAN BLVD

 PLACE OF WORK	2 MILES	3 MILES	5 MILES	10 MILES
2018 Businesses	338	928	4,921	23,344
2018 Employees	20,723	28,625	82,797	333,153

 POPULATION	2 MILES	3 MILES	5 MILES	10 MILES
2018 Population - Current Year Estimate	7,625	33,028	178,199	667,920
2023 Population - Five Year Projection	7,675	33,241	180,631	676,798
2010 Population - Census	7,434	32,254	173,680	652,921
2000 Population - Census	4,792	24,451	160,791	603,976
2010-2018 Annual Population Growth Rate	0.31%	0.29%	0.31%	0.28%
2018-2023 Annual Population Growth Rate	0.13%	0.13%	0.27%	0.26%

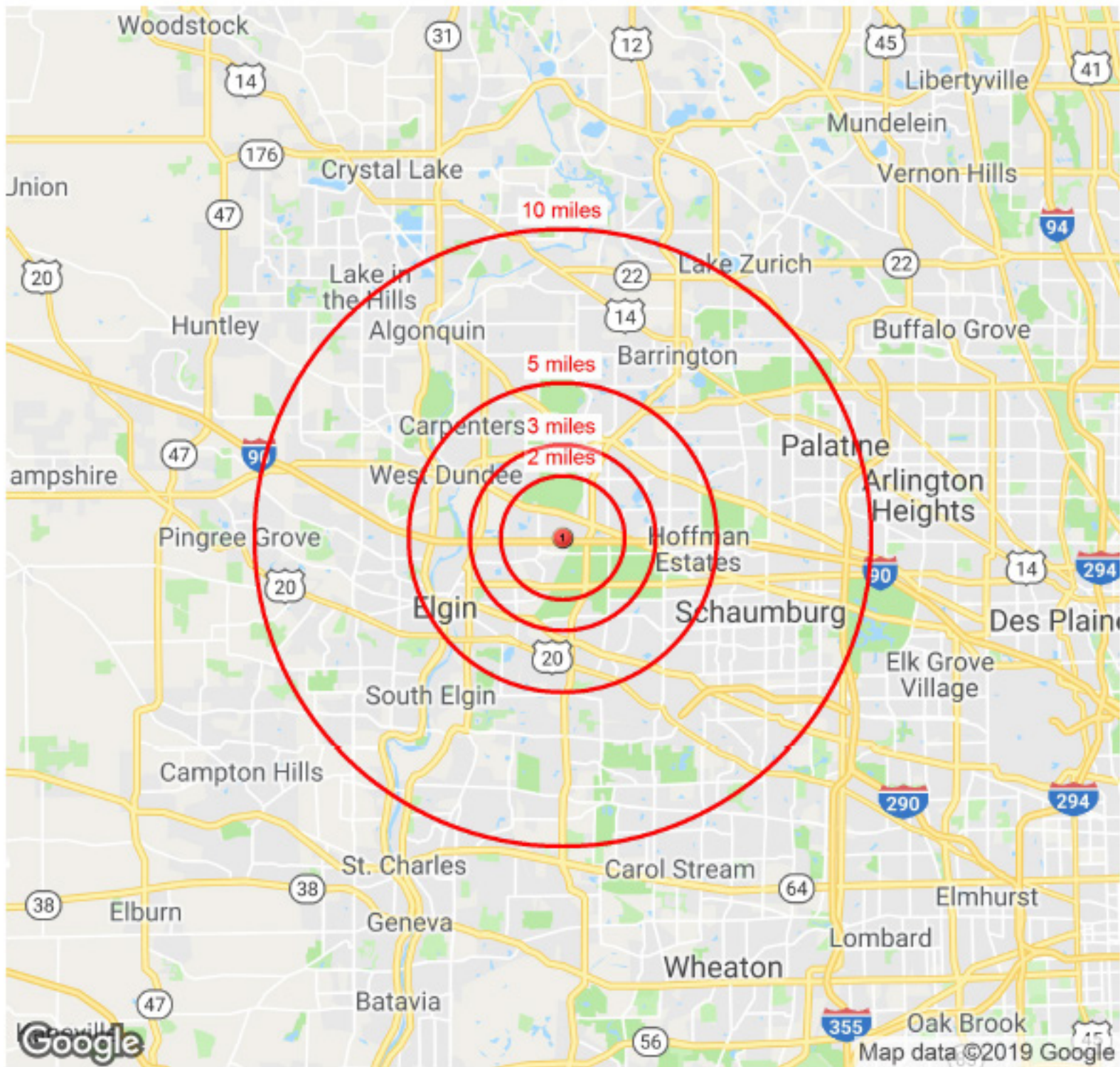
 EDUCATION	2 MILES	3 MILES	5 MILES	10 MILES
2018 Population 25 and Over	5,155	22,137	115,295	452,361
Less than 9th Grade	154 3.0%	1,216 5.5%	10,276 8.9%	22,244 4.9%
9-12th Grade - No Diploma	238 4.6%	1,266 5.7%	9,025 7.8%	22,473 5.0%
High School Diploma	797 15.5%	4,616 20.9%	24,683 21.4%	83,147 18.4%
GED or Alternative Credential	87 1.7%	554 2.5%	3,814 3.3%	11,555 2.6%
Some College - No Degree	864 16.8%	4,126 18.6%	22,549 19.6%	92,100 20.4%
Associate's Degree	253 4.9%	1,336 6.0%	7,857 6.8%	36,351 8.0%
Bachelor's Degree	1,642 31.9%	5,789 26.2%	24,807 21.5%	120,050 26.5%
Graduate or Professional Degree	1,120 21.7%	3,234 14.6%	12,284 10.7%	64,441 14.2%

 HOUSEHOLDS	2 MILES	3 MILES	5 MILES	10 MILES
2018 Households - Current Year Estimate	2,471	10,864	58,697	234,461
2023 Households - Five Year Projection	2,480	10,907	59,429	237,431
2010 Households - Census	2,425	10,691	57,502	229,119
2000 Households - Census	1,607	8,388	54,520	210,404
2010-2018 Annual Household Growth Rate	0.23%	0.19%	0.25%	0.28%
2018-2023 Annual Household Growth Rate	0.07%	0.08%	0.25%	0.25%
2018 Average Household Size	3.08	3.03	3.00	2.83

 HOUSEHOLD INCOME	2 MILES	3 MILES	5 MILES	10 MILES
2018 Average Household Income	\$146,994	\$119,308	\$91,759	\$107,798
2023 Average Household Income	\$160,874	\$131,039	\$101,078	\$118,626
2018 Median Household Income	\$113,731	\$91,546	\$70,056	\$83,597
2023 Median Household Income	\$119,517	\$98,659	\$75,881	\$89,221
2018 Per Capita Income	\$48,600	\$39,861	\$30,577	\$38,121
2023 Per Capita Income	\$52,974	\$43,657	\$33,601	\$41,898

 DAYTIME POPULATION	2 MILES	3 MILES	5 MILES	10 MILES
2018 Daytime Population	29,347	47,086	170,446	642,018
Daytime Workers	25,567 87.1%	30,814 65.4%	84,011 49.3%	331,254 51.6%
Daytime Residents	3,780 12.9%	16,272 34.6%	86,435 50.7%	310,764 48.4%

5190 HOFFMAN BLVD



	Name	Latitude	Longitude
1	5190 HOFFMAN BLVD	42.067764	-88.2083835

©2019 CBRE. This information has been obtained from sources believed reliable. We have not verified it and make no guarantee, warranty or representation about it. Any projections, opinions, assumptions or estimates used are for example only and do not represent the current or future performance of the property. You and your advisors should conduct a careful, independent investigation of the property to determine to your satisfaction the suitability of the property for your needs. Source: Earl ProjectD4358590