

FOR SUBLEASE

JEFFERSON PARK PLAZA

4718

NORTH MILWAUKEE AVENUE

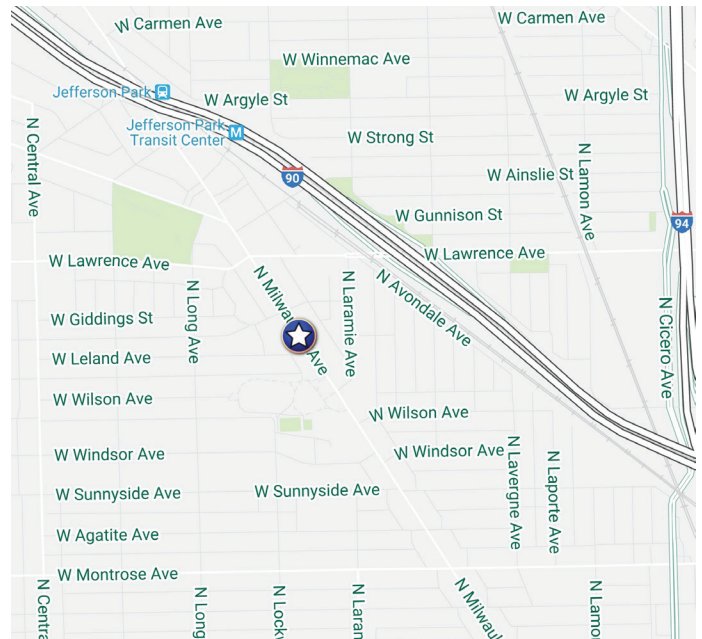
Chicago, Illinois 60630



SUBLEASE AVAILABLE

2,940 SQUARE FEET IN CHICAGO'S JEFFERSON PARK NEIGHBORHOOD

- + 46 surface parking spaces
- + 16,600 vehicles daily on Milwaukee Avenue
- + Monument signage available
- + Close proximity to public transportation via CTA Blue Line and Metra UP-NW trains; #56 Milwaukee and #81 Lawrence buses
- + 1/2 mile to I-90, 1 mile to I-94 expressways
- + Neighboring tenants include:
 - O'Reilly Auto Parts
 - China Star Restaurant
 - Monk's Herb Center
 - Laundromat
 - Rocket Plumbing



CONTACT US

YOLANDA VALLE

+1 312 935 1433

yolanda.valle@cbre.com

JAMES HURST

+1 312 456 7051

james.hurst@cbre.com

www.cbre.us

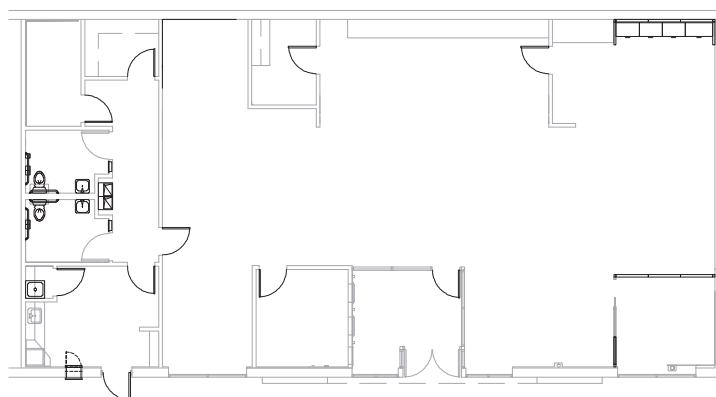
CBRE

FOR SUBLEASE JEFFERSON PARK PLAZA

4718
NORTH MILWAUKEE AVENUE
Chicago, Illinois 60630



SUITE INTERIOR



AREA DEMOGRAPHICS

Demographics	0.5 Miles	1 Mile	3 Miles
Population	11,763	42,136	380,243
Daytime Population	9,032	32,326	284,490
Households	4,876	16,338	131,992
Average Household Income	\$73,613	\$80,642	\$78,874
Median Home Value	\$278,872	\$301,850	\$299,793

© 2017 CBRE, Inc. All rights reserved. This information has been obtained from sources believed reliable, but has not been verified for accuracy or completeness. You should conduct a careful, independent investigation of the property and verify all information. Any reliance on this information is solely at your own risk. CBRE and the CBRE logo are service marks of CBRE, Inc. All other marks displayed on this document are the property of their respective owners. Photos herein are the property of their respective owners. Use of these images without the express written consent of the owner is prohibited.