

CBRE

330 HUDSON  
STREET

Northeast corner of Hudson & Charlton Streets







CBRE, as exclusive sublease agent presents:

# 330 HUDSON STREET

## PREMISES

Ground Floor	12,108 SF
Lower Level	1,219 SF

## TERM

Sublease through May 12, 2025

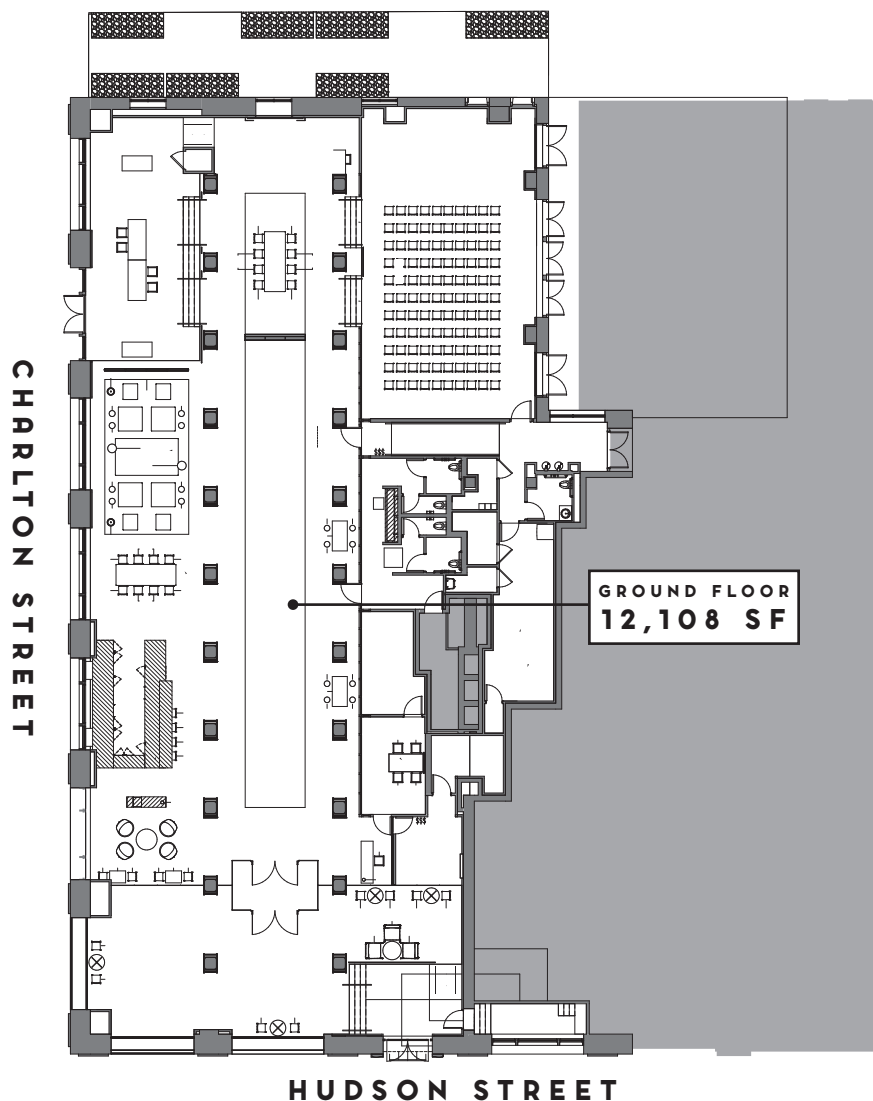
- One of the most impressive retail spaces on the market
- Fully built out including ADA compliant restrooms
- Operational garage-style façade windows
- Soaring ceiling heights
- Ideal for restaurant or showroom











# 330 HUDSON STREET

For more information contact:

**MATT CHMIELECKI**

+1 212 984 6698

[Matt.Chmielecki@cbre.com](mailto:Matt.Chmielecki@cbre.com)

**PRESTON CANNON**

+1 212 984 6544

[Preston.Cannon@cbre.com](mailto:Preston.Cannon@cbre.com)