

## FOR LEASE/ RE-DEVELOPMENT

# EDMOND CENTRAL PLAZA

930 E 2ND STREET, EDMOND OK 73034



## PROPERTY INFO

- + Located at a lighted, high-traffic corridor of 2nd Street across from University of Central Oklahoma
- + 6-Minute drive time to I-35
- + Double-sided pylon signage
- + 235 parking spaces available
- + Central Plaza offers housing for 300+ students
- + High-income surrounding neighborhoods
- + Edmond's premier retail corridor

## AVAILABLE SPACE

- + ±10,300 SF (See second page for all available spaces)

## LEASE PRICE

- + Call for Rates



## Traffic Counts

2nd Street	27,200 ADT
Bryant Ave	13,000 ADT
Boulevard Ave	13,360 ADT
Interstate 35	71,000 ADT

Source: Oklahoma Department of Transportation

## 2019 Demographics

	1 Mile	3 Miles	5 Miles
Population	13,871	77,772	129,445
Households	5,832	30,784	49,343
Average Household Income	\$67,441	\$93,335	\$107,457
Daytime Employment	13,472	37,784	56,960

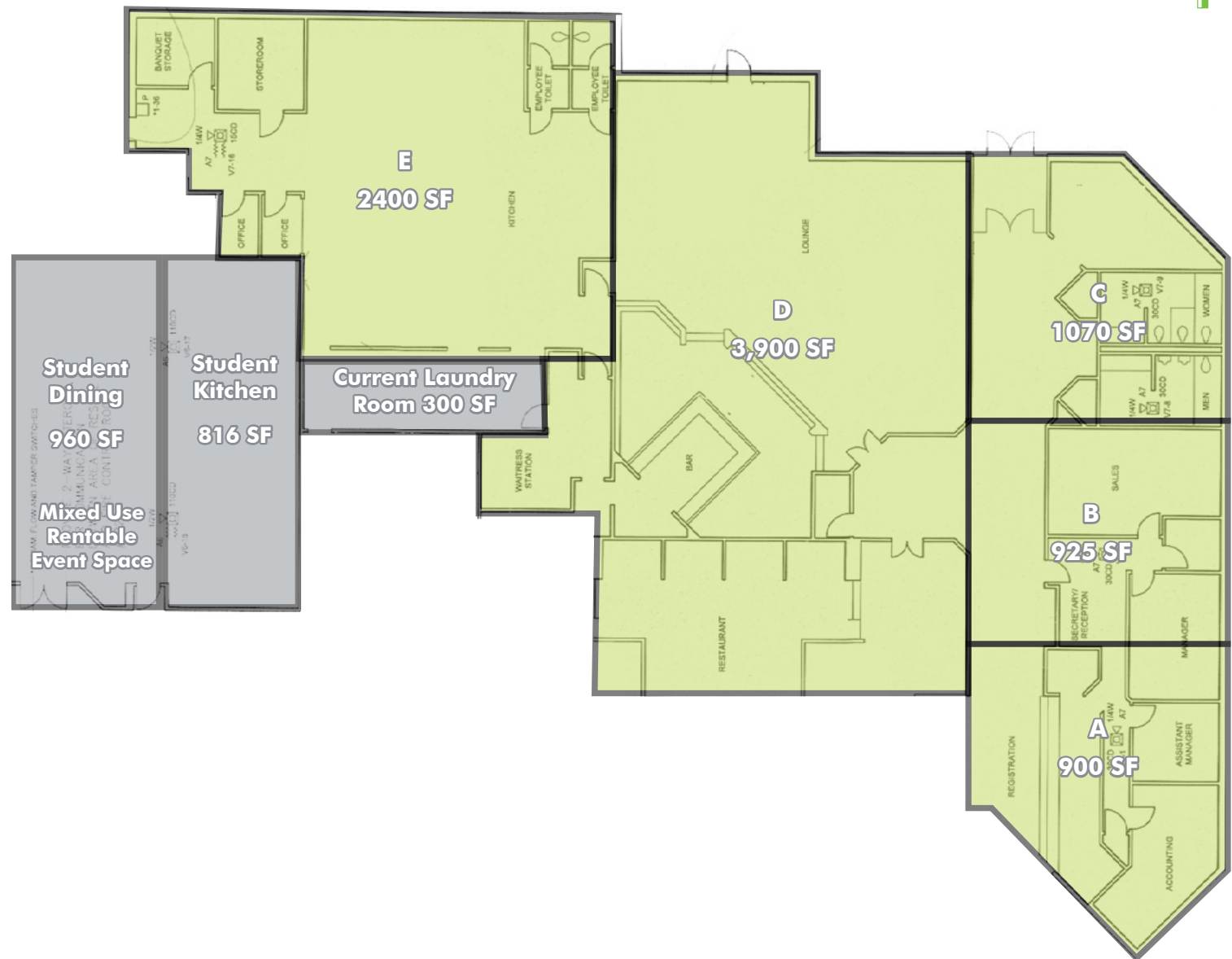
Retail Science from CBRE

[www.cbre.us/okretail](http://www.cbre.us/okretail)

**CBRE**

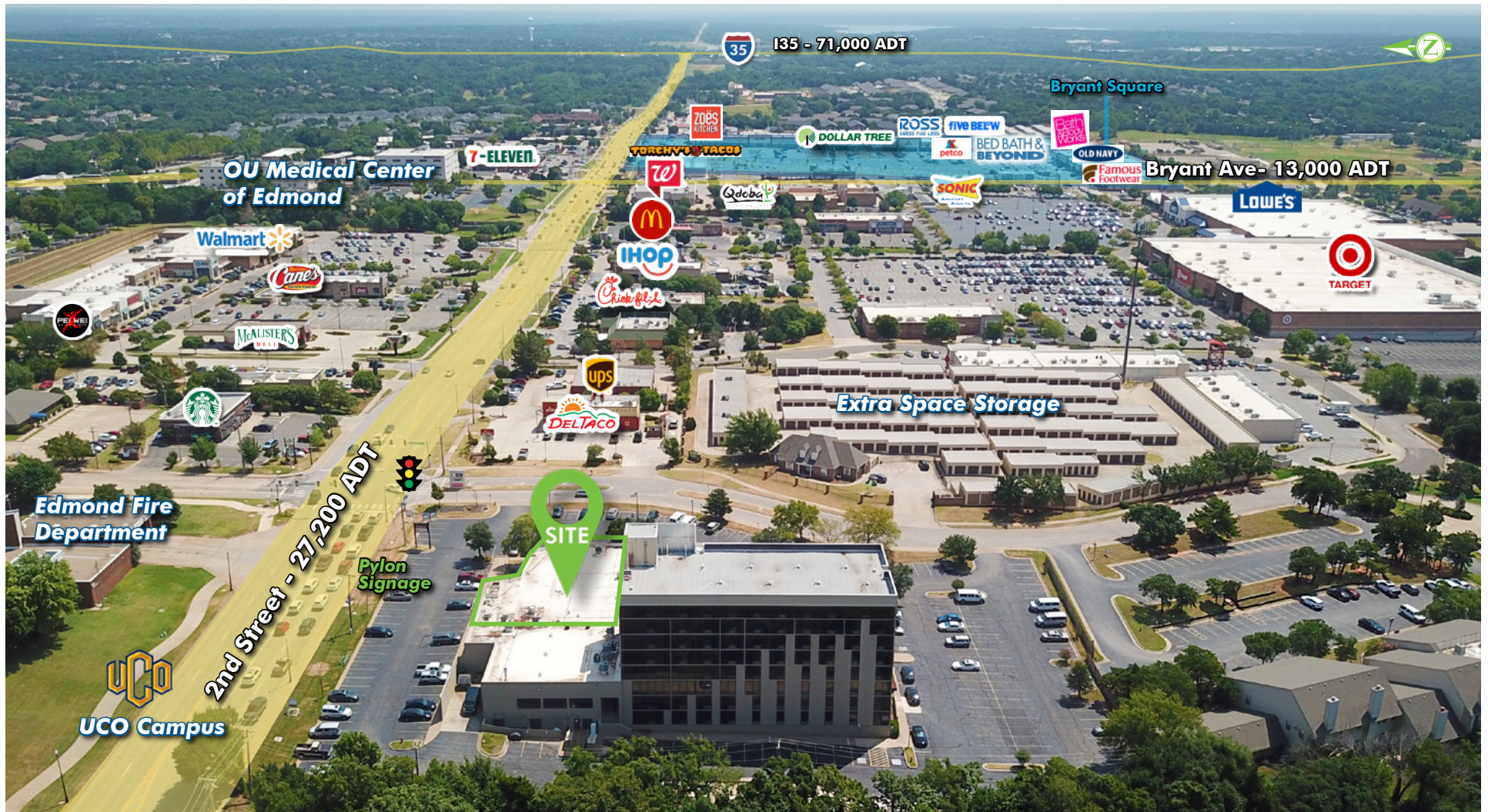


Retail Area Availability
<b>A</b> - 900 SF
<b>B</b> - 925 SF
<b>C</b> - 1,070 SF
<b>D</b> - 3,900 SF
<b>E</b> - 2,400 SF





**FOR LEASE/RE-DEVELOPMENT** | EDMOND CENTRAL PLAZA | 930 E 2ND STREET, EDMOND OK 73034





**FOR LEASE/RE-DEVELOPMENT** | EDMOND CENTRAL PLAZA | 930 E 2ND STREET, EDMOND OK 73034



## CONTACT US

**Kendra Roberts**

Associate  
405 607 6050  
kendra.roberts@cbre.com

**Mark W. Inman, CPA**

Senior Vice President  
405 607 6272  
mark.inman@cbre.com

**Stuart Graham**

First Vice President  
405 607 6027  
stuart.graham@cbre.com

© 2019 CBRE, Inc. All rights reserved. This information has been obtained from sources believed reliable, but has not been verified for accuracy or completeness. You should conduct a careful, independent investigation of the property and verify all information. Any reliance on this information is solely at your own risk. CBRE and the CBRE logo are service marks of CBRE, Inc. All other marks displayed on this document are the property of their respective owners. Photos herein are the property of their respective owners. Use of these images without the express written consent of the owner is prohibited.