

FOR LEASE

Main Street Village

16111-41 S. LAGRANGE RD, ORLAND PARK, IL 60467

RETAIL

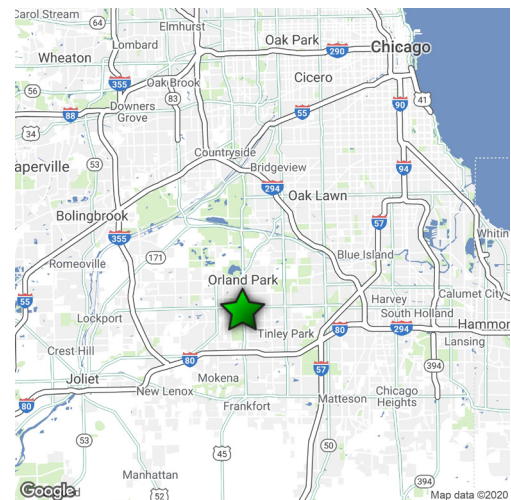


PROPERTY INFO

- + Center Size: $\pm 27,397$ SF on ± 1.48 Acres
- + Available Size: $\pm 3,500$ SF
- + Zoning: COR
- + Excellent traffic counts of 39,000 vpd on LaGrange Rd and 32,900 vpd on 159th St
- + Strong regional shopping area
- + Good visibility off of LaGrange Rd

Demographic Report

	1 Miles	3 Miles	5 Miles
Population	7,814	79,342	176,129
Estimate Households	3,043	29,538	65,616
Median HH Income	\$78,253	\$90,697	\$91,426
Average HH Income	\$93,091	\$113,611	\$113,151
Daytime Population	10,111	71,941	160,893



CONTACT US

Lynne Brackett

+1 630 573 7035

lynne.brackett@cbre.com

www.cbre.com/lynne.brackett

Pam Miskowicz

+1 630 573 1274

pam.miskowicz@cbre.com

www.cbre.com/pam.miskowicz

www.cbre.us/orlandparkmsv

CBRE

FOR LEASE

Main Street Village

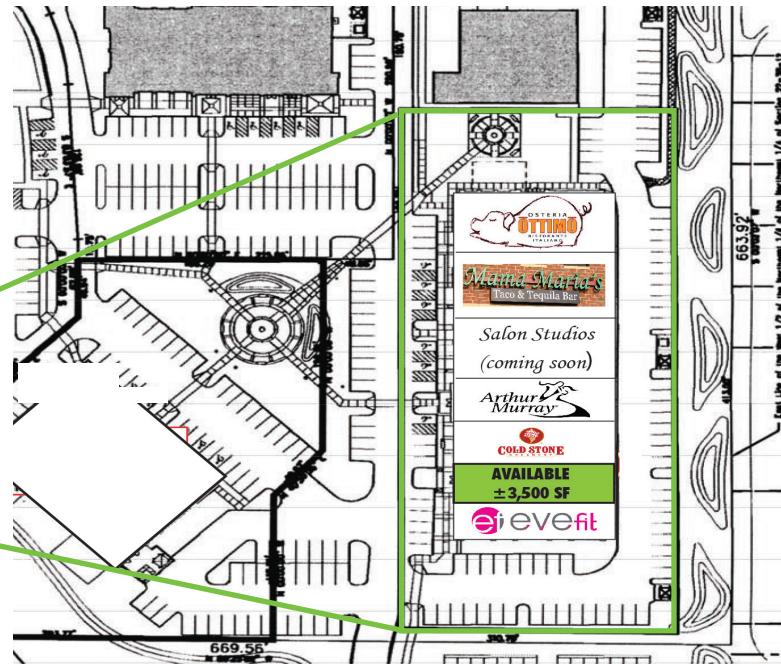
16111-41 S. LAGRANGE RD, ORLAND PARK, IL 60467

RETAIL

SITE PLAN & AERIAL



SPACE	TENANT
16111	Ottimo Ristorante Italiano
16117	Mama Maria's Taco & Tequila Bar
16123	Salon Suites (coming soon)
16131	Arthur Murray Dance
16135	Cold Stone Creamery
16141	AVAILABLE (±3,500 SF)
16145	Eve Fit



© 2020 CBRE, Inc. This information has been obtained from sources believed reliable. We have not verified it and make no guarantee, warranty or representation about it. Any projections, opinions, assumptions or estimates used are for example only and do not represent the current or future performance of the property. You and your advisors should conduct a careful, independent investigation of the property to determine to your satisfaction the suitability of the property for your needs. Photos herein are the property of their respective owners and use of these images without the express written consent of the owner is prohibited. CBRE and the CBRE logo are service marks of CBRE, Inc. and/or its affiliated or related companies in the United States and other countries. All other marks displayed on this document are the property of their respective owners.