

645 North Michigan



1,814 SF STREET LEVEL, 2,309 SF SECOND LEVEL + 2,400 SF LOWER LEVEL

Space Highlights

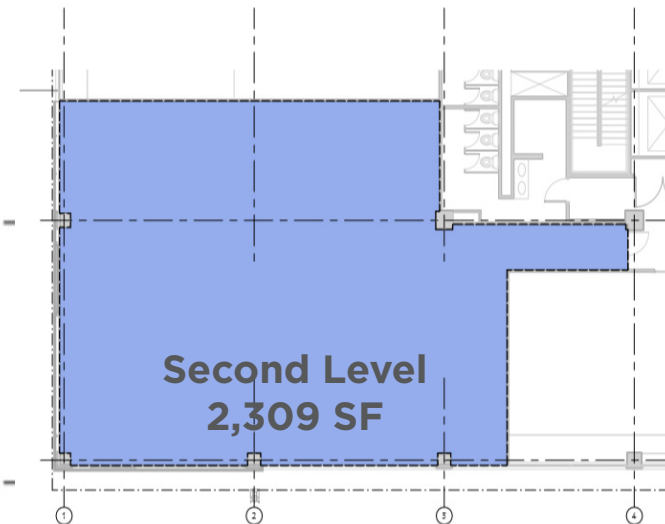
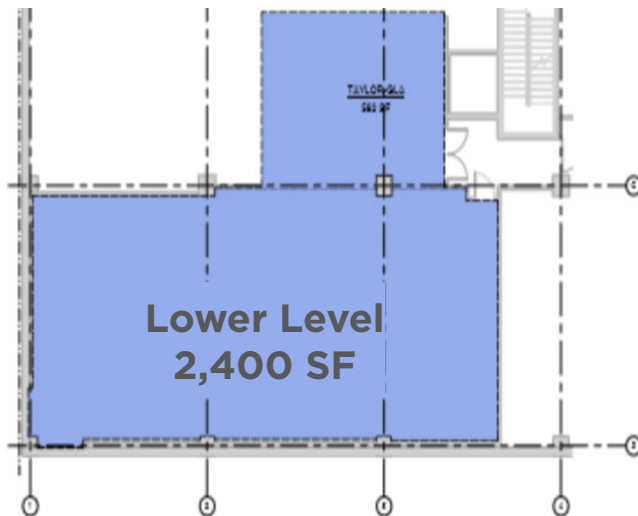
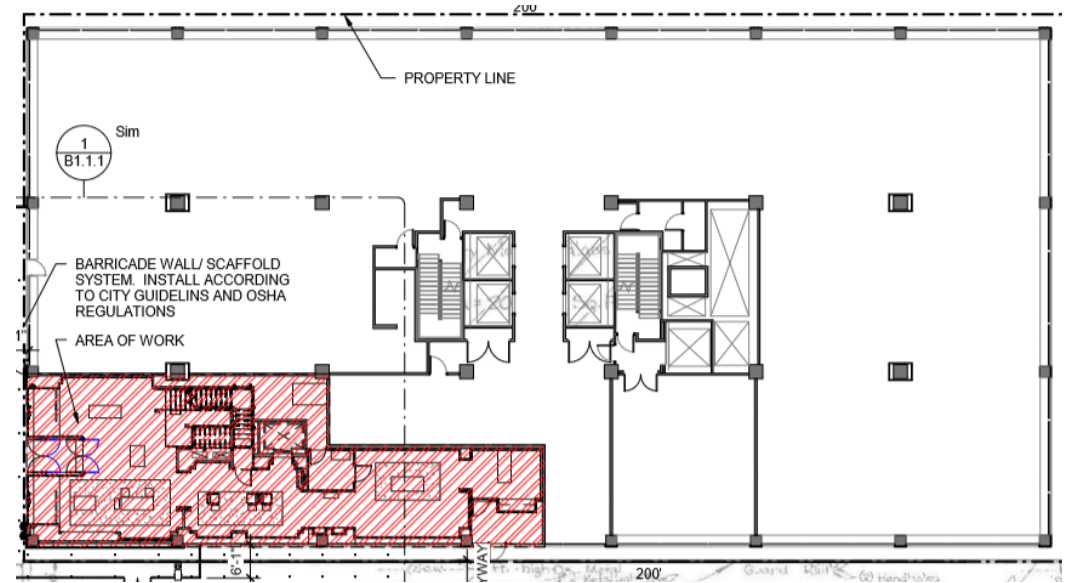
1,814 SF retail space at street level and
2,309 SF retail space on the second level
plus 2,400 SF lower level at no extra charge

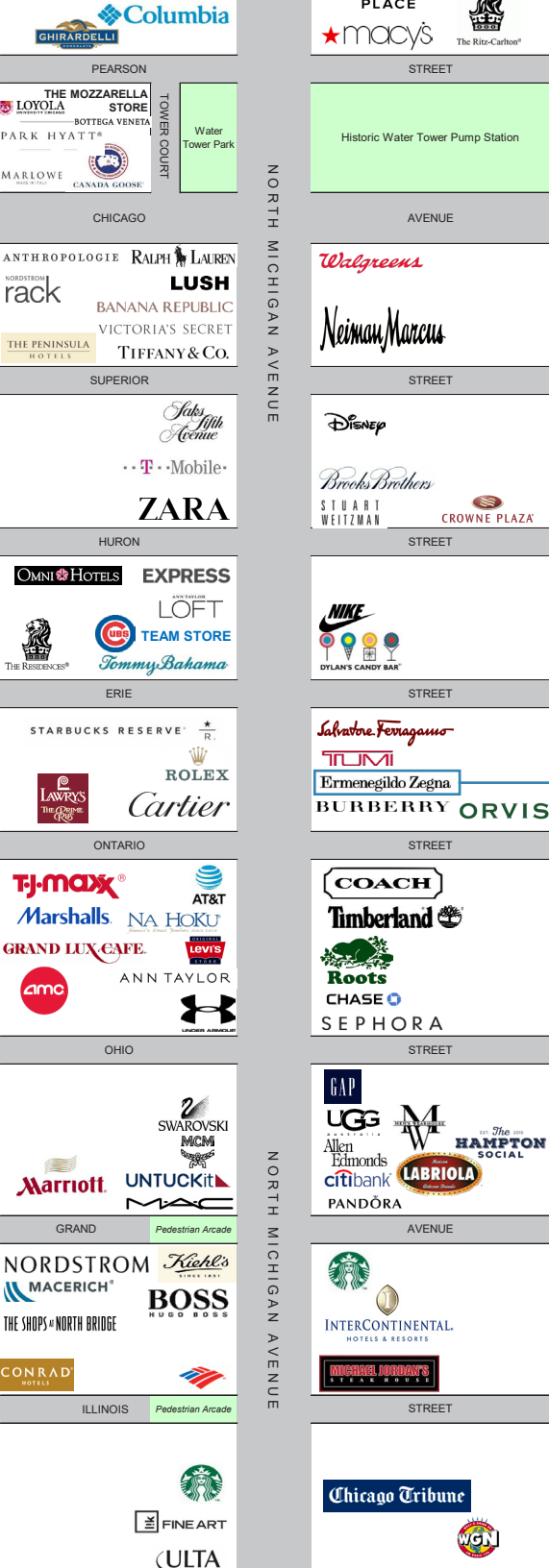
Between E. Erie and E. Ontario - direct neighbors
are Burberry, Ferragamo, and Tumi

35 feet of frontage

Exclusive elevator within Premises

Sublease ends March 31, 2032 - possession
upon signing





ANN TAYLOR
AT&T

CHASE

Levi's

BAPTISTE
&
BOTTLE
BOURBON + PROVISIONS

LAWRY'S
THE PRIME
RIB

SEPHORA

COACH
NEW YORK

NA HOKU
Hawaii's Finest Jewelers Since 1924

Timberland

SID
DOOR

BURBERRY

DYLAN'S CANDY BAR

NIKE

Starbucks

Tommy Bahama

ORVIS

STARBUCKS RESERVE

TUMI

UNDER ARMOUR

THE
CAPITAL
GRILLE

Cartier

Salvatore Ferragamo

Roots

Within Two Blocks

645
NTHA

EXPRESS

MAC

Room&Board

T-Mobile

TRADER JOE'S

UGG

UNTUCKit

ZARA

BIG BOWL
CHINESE AND THAI

Brooks Brothers

EST. 2015
HAMPTON
SOCIAL

M
MEN'S WEARHOUSE

PANDORA

SHAKE SHACK

citi bank

GAP

Steak
48

RON OF JAPAN

SWAROVSKI

Disney

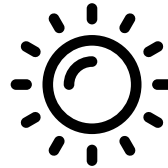
LABRIOLA
RESTORANTE & CAFE
NEAPOLITAN PIZZERIA

The Magnificent Mile District

Within .5 Mi of 645 NMA in 2019



39,931 RESIDENTS WITH A
MEDIAN AGE OF 38.5



132,700 WORKERS AND
RESIDENTS PRESENT DURING
THE DAY



26,726 HOUSEHOLDS WITH
AN AVERAGE HOUSEHOLD
INCOME OF \$154,901



AVERAGE HOUSING VALUE OF
\$776,578



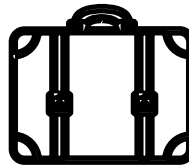
RESIDENTS, WORKERS, AND
VISITORS SPEND \$2.7 BILLION
ON RETAIL GOODS ANNUALLY



449 RESTAURANTS AND BARS
DO \$717.2 MILLION IN SALES
ANNUALLY



MORE THAN 600 RETAIL
LOCATIONS, INCLUDING
LUXURY BRANDS SUCH AS
BURBERRY, LOUIS VUITTON,
CHANEL, AND MORE



OVER 20 MILLION VISITORS
TRAVEL TO THE MAG
MILE ANNUALLY FOR THE
SHOPPING, DINING, AND
SIGHTSEEING EXPERIENCES



79 HOTELS CONTAINING
26,773 ROOMS AND 1,195,795
SF OF MEETING SPACE AT AN
AVERAGE DAILY ROOM RATE
OF \$237.10 AND AVERAGE
OCCUPANCY RATE OF 73.70%

645 North Michigan



FOR MORE INFORMATION, PLEASE CONTACT:

CBRE

SHARON KAHAN
312 297 7679

SHARON.KAHAN@CBRE.COM

AMY SIDER
312 935 1909

AMY.SIDER@CBRE.COM

Siegel Consultants, Ltd.

JOAN SIEGEL
631 351 3505

JOAN@SIEGELCONSULTANTS.COM

© 2020 CBRE, Inc. All rights reserved. This information has been obtained from sources believed reliable, but has not been verified for accuracy or completeness. Any projections, opinions, or estimates are subject to uncertainty. The information may not represent the current or future performance of the property. You and your advisors should conduct a careful, independent investigation of the property and verify all information. Any reliance on this information is solely at your own risk. CBRE and the CBRE logo are service marks of CBRE, Inc. and/or its affiliated or related companies in the United States and other countries. All other marks displayed on this document are the property of their respective owners. Photos herein are the property of their respective owners and use of these images without the express written consent of the owner is prohibited.