

FOR LEASE

# NEW RETAIL DEVELOPMENT | ANCHOR SITE OUTPARCELS AVAILABLE | MULTI-TENANT

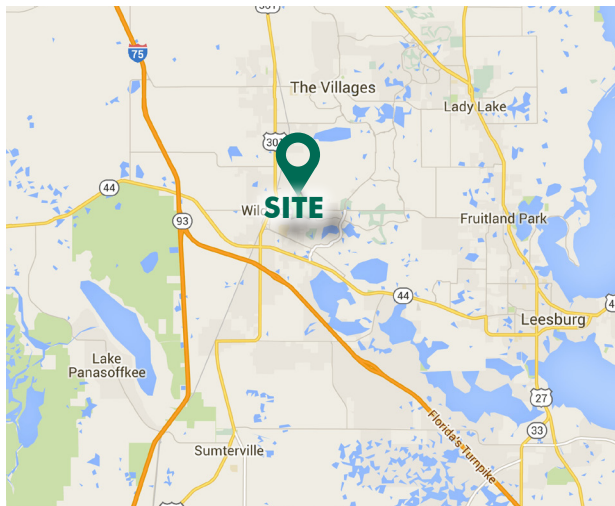
NWC OF COUNTY ROAD 466-A & COUNTY ROAD 462, WILDWOOD, FL 34785

RETAIL



## PROPERTY INFO

- + Anchor Pad Available
- + Outparcels Available
- + Direct Frontage on CR 466A
- + Signalized Intersection
- + Ideal for Gas, QSR, Medical, Auto, Bank, etc.



FOR MORE INFORMATION PLEASE CONTACT

**James Mitchell**

Executive Vice President

+1 407 404 5024

james.mitchell@cbre.com

**Cabot Jaffee**

Senior Associate

+1 407 404 5051

cabot.jaffee@cbre.com



[www.cbre.com/orlando](http://www.cbre.com/orlando)

**CBRE**

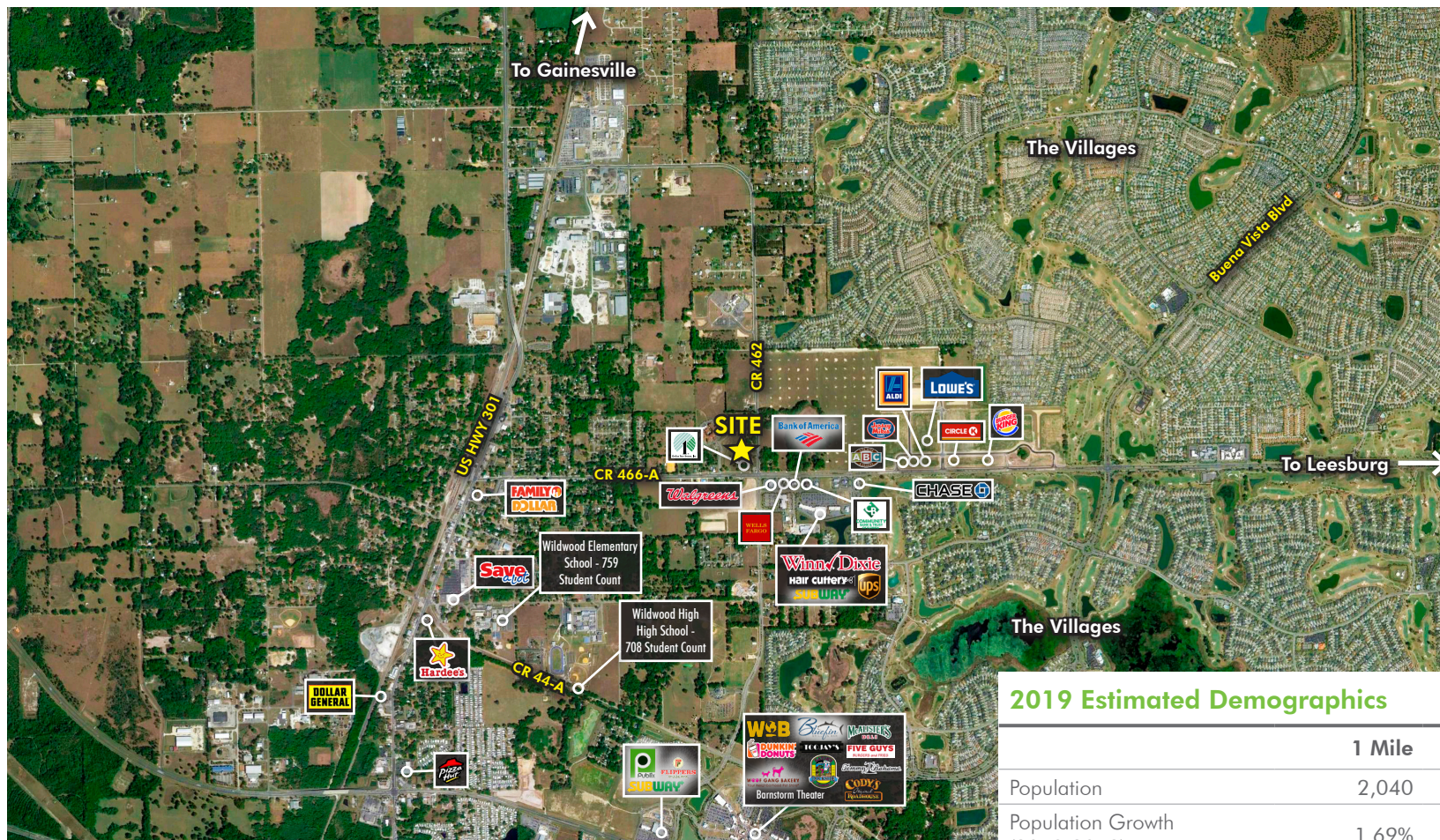


FOR LEASE

# NEW RETAIL DEVELOPMENT | ANCHOR SITE OUTPARCELS AVAILABLE | MULTI-TENANT

NWC OF COUNTY ROAD 466-A & COUNTY ROAD 462, WILDWOOD, FL 34785

RETAIL



## 2019 Estimated Demographics

	1 Mile	3 Miles	5 Miles
Population	2,040	45,073	82,409
Population Growth (2010-2019)	1.69%	10.56%	7.48%
Households	787	21,745	40,274
Median Household Income	\$67,989	\$62,435	\$60,371
Average Household Income	\$86,171	\$82,941	\$81,033

FOR MORE  
INFORMATION  
PLEASE  
CONTACT

**James Mitchell**

Executive Vice President

+1 407 404 5024

james.mitchell@cbre.com

**Cabot Jaffee**

Senior Associate

+1 407 404 5051

cabot.jaffee@cbre.com

**CBRE, Inc. | Licensed Real Estate Broker**

[www.cbre.com/orlando](http://www.cbre.com/orlando)

**CBRE**



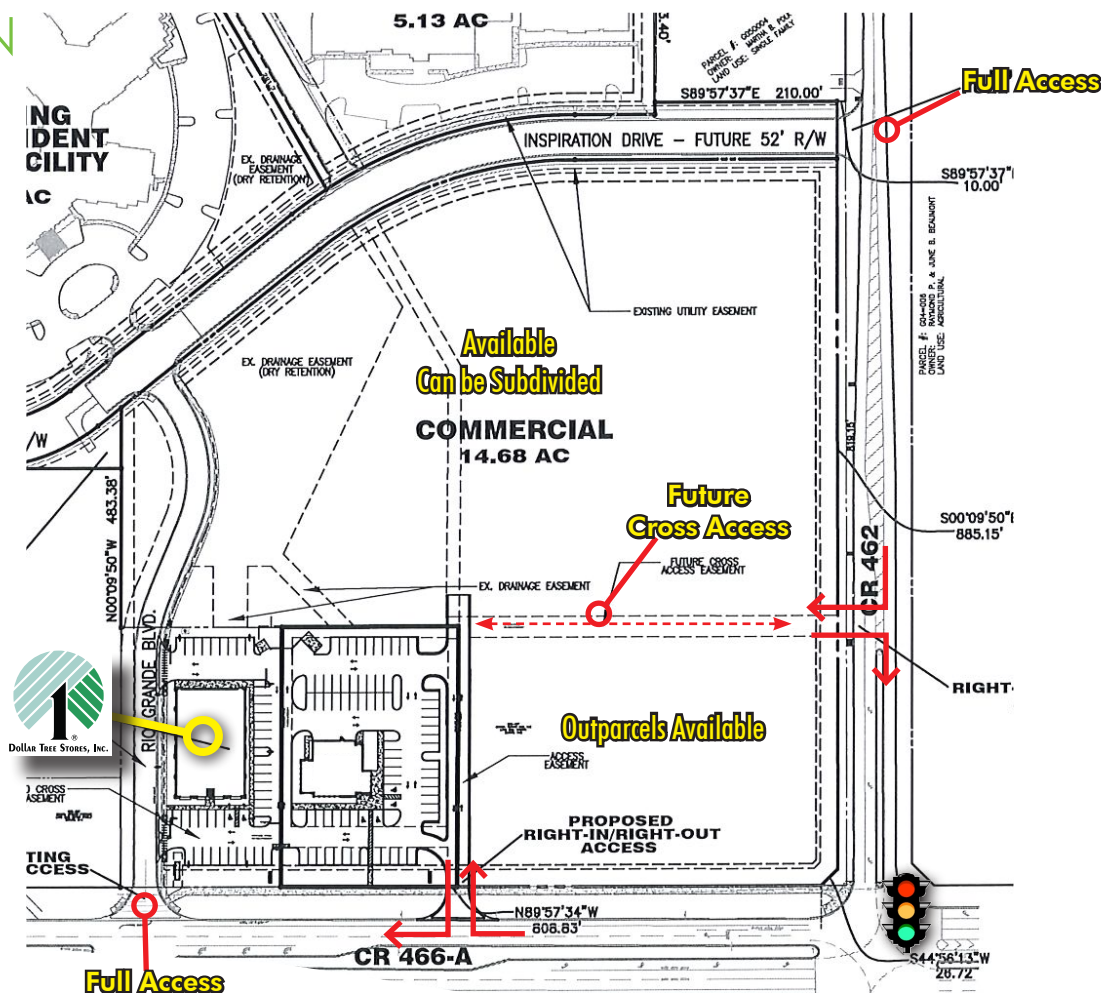
FOR LEASE

# NEW RETAIL DEVELOPMENT | ANCHOR SITE OUTPARCELS AVAILABLE | MULTI-TENANT

NWC OF COUNTY ROAD 466-A & COUNTY ROAD 462, WILDWOOD, FL 34785

RETAIL

## CONCEPTUAL SITE PLAN



FOR MORE  
INFORMATION  
PLEASE  
CONTACT

**James Mitchell**

Executive Vice President  
+1 407 404 5024

james.mitchell@cbre.com

**Cabot Jaffee**

Senior Associate  
+1 407 404 5051

cabot.jaffee@cbre.com

© 2018 CBRE, Inc. All rights reserved. This information has been obtained from sources believed reliable, but has not been verified for accuracy or completeness. You should conduct a careful, independent investigation of the property and verify all information. Any reliance on this information is solely at your own risk. CBRE and the CBRE logo are service marks of CBRE, Inc. All other marks displayed on this document are the property of their respective owners. Photos herein are the property of their respective owners. Use of these images without the express written consent of the owner is prohibited.

CBRE, Inc. | Licensed Real Estate Broker

[www.cbre.com/orlando](http://www.cbre.com/orlando)

**CBRE**

FOR LEASE

# NEW RETAIL DEVELOPMENT | ANCHOR SITE OUTPARCELS AVAILABLE | MULTI-TENANT

NWC OF COUNTY ROAD 466-A & COUNTY ROAD 462, WILDWOOD, FL 34785

RETAIL

## The Villages

The Villages is the largest single-site residential real estate development in the United States spanning over 26,000 acres in three adjoining counties in Central Florida. An hour north of Orlando, The Villages is planned to be home to 2.7 million square feet of commercial buildings and retail tenants.

Family owned and operated for over 25 years, The Villages is currently home to approximately 90,600 residents with a projected build out of more than 109,444 by 2017. Over 15,000 people work in The Villages, or for businesses in the thriving community, which has its own newspaper, radio station and television station. Residents living in The Villages have an average income that is almost double the U.S. average and are dedicated to supporting business and community growth.

There are 33 executive golf courses and 11 Country Club courses in The Villages.

Source: [www.thevillagescommercialproperty.com](http://www.thevillagescommercialproperty.com)

FOR MORE  
INFORMATION  
PLEASE  
CONTACT

### James Mitchell

Executive Vice President

+1 407 404 5024

[james.mitchell@cbre.com](mailto:james.mitchell@cbre.com)

### Cabot Jaffee

Senior Associate

+1 407 404 5051

[cabot.jaffee@cbre.com](mailto:cabot.jaffee@cbre.com)

### CBRE, Inc. | Licensed Real Estate Broker

200 S. Orange Avenue | Suite 2100 | Orlando, FL 32801

© 2018 CBRE, Inc. All rights reserved. This information has been obtained from sources believed reliable, but has not been verified for accuracy or completeness. You should conduct a careful, independent investigation of the property and verify all information. Any reliance on this information is solely at your own risk. CBRE and the CBRE logo are service marks of CBRE, Inc. All other marks displayed on this document are the property of their respective owners. Photos herein are the property of their respective owners. Use of these images without the express written consent of the owner is prohibited.

[www.cbre.com/orlando](http://www.cbre.com/orlando)

**CBRE**