

FOR LEASE

# SKYLINE SKY 7

5275 LEESBURG PIKE, FALLS CHURCH, VA

**LANCE LJ MARINE**  
Senior Vice President  
+1 703 905 0331  
[lance.marine@cbre.com](mailto:lance.marine@cbre.com)

**MICHAEL ZACHARIA**  
Executive Vice President  
+1 703 905 0268  
[michael.zacharia@cbre.com](mailto:michael.zacharia@cbre.com)

[WWW.CBRE.US/SKYLINE](http://WWW.CBRE.US/SKYLINE)

**CBRE**





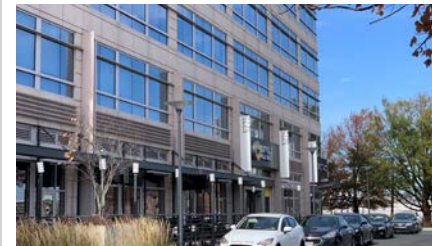
## AVAILABILITY

**3,096 SF**  
WITH THE ABILITY TO EXPAND TO  
**6,000 SF**

PRIMED FOR RETAIL AND/  
OR RESTAURANT USE

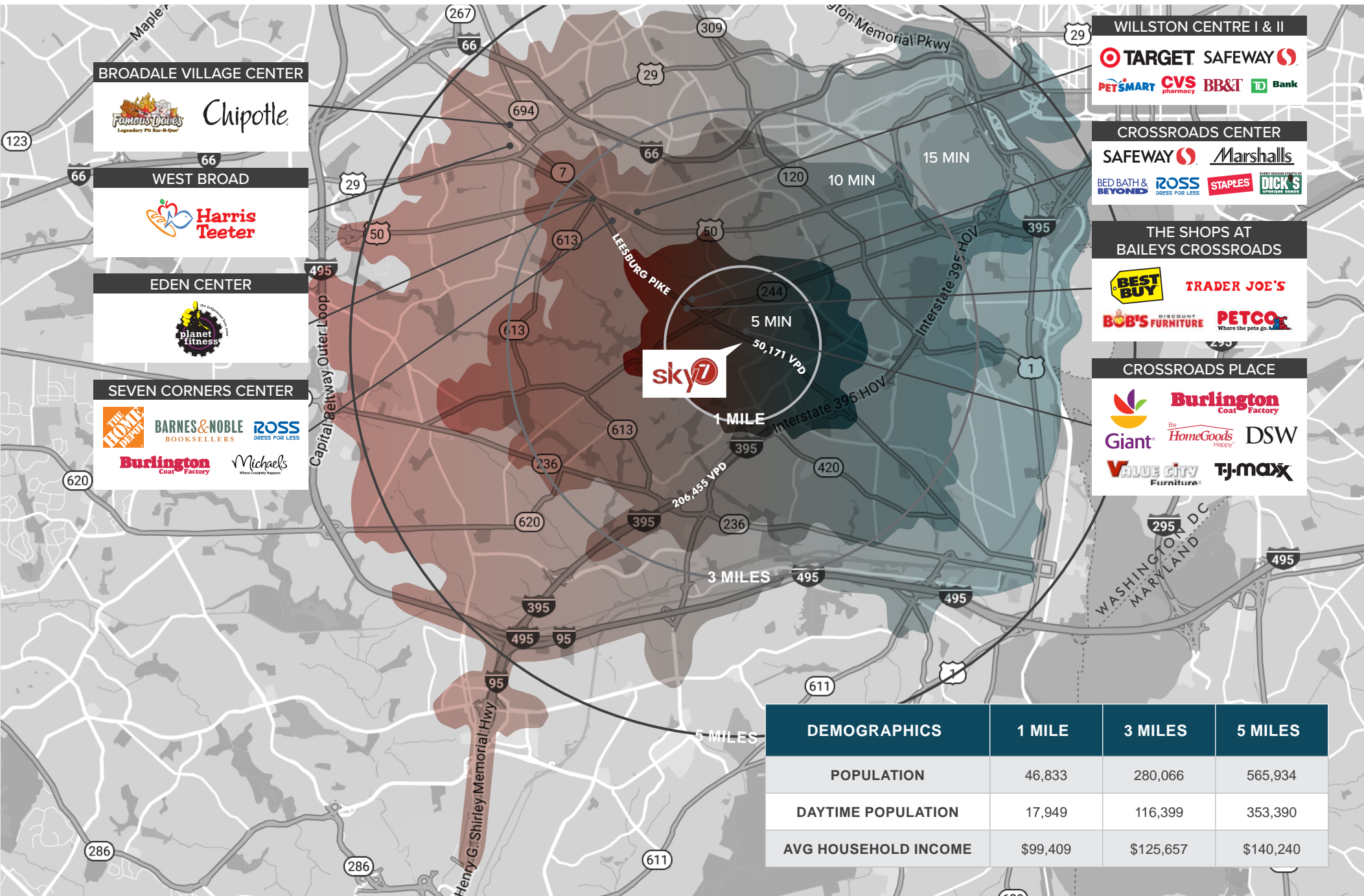
### SPACE HIGHLIGHTS

- First floor retail along Leesburg Pike with 425,994 square feet of office space throughout the building
- Convenient location provides easy access to multiple major roadways, including Route 50, Leesburg Pike, Columbia Pike, and I-395
- Strategically developed at the convergence of Arlington County, Fairfax County, and the City of Alexandria
- Strong anchor tenants: Target and Sport & Health
- Ample surface parking spaces



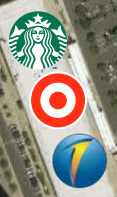
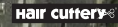
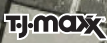
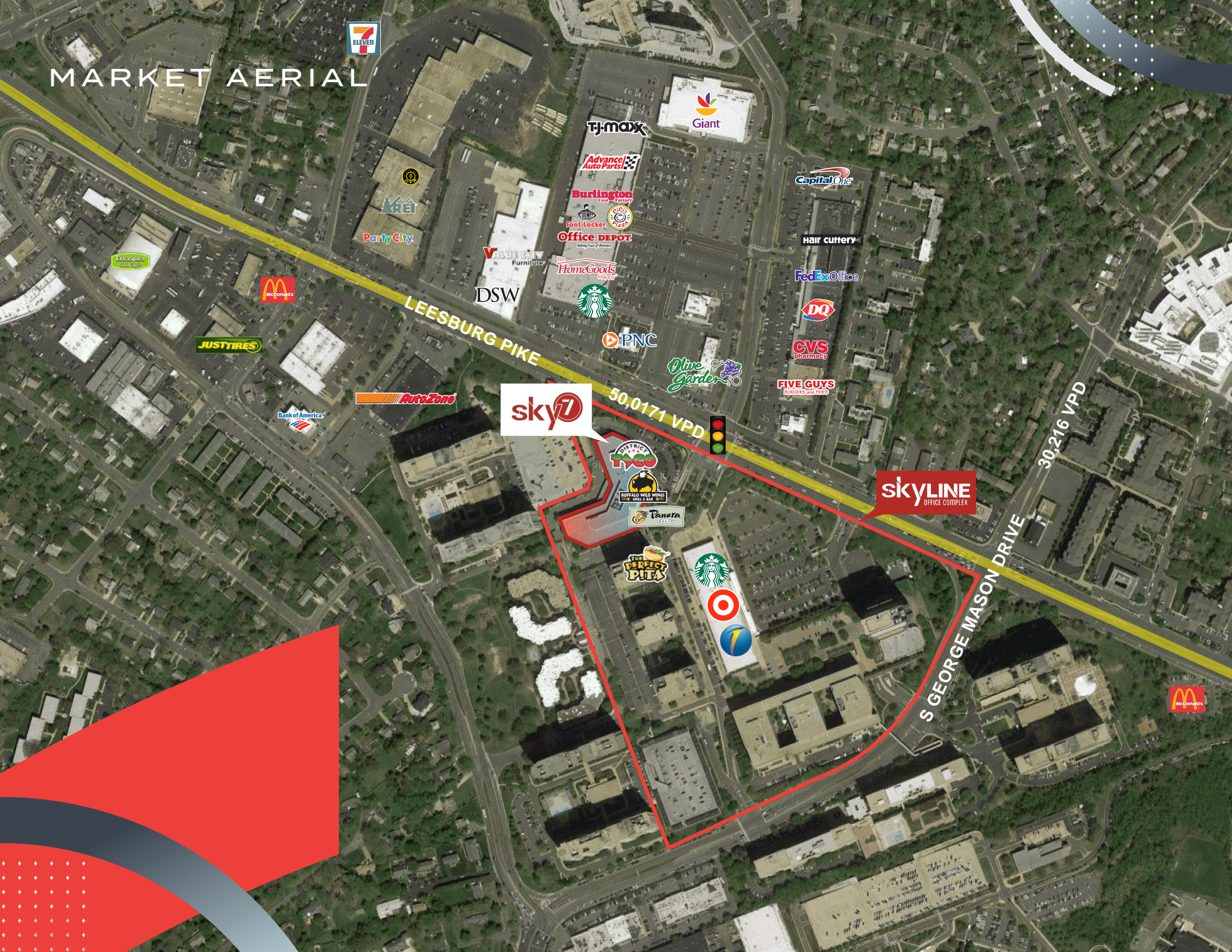


# DRIVE TIME MAP





# MARKET AERIAL



LEESBURG PIKE

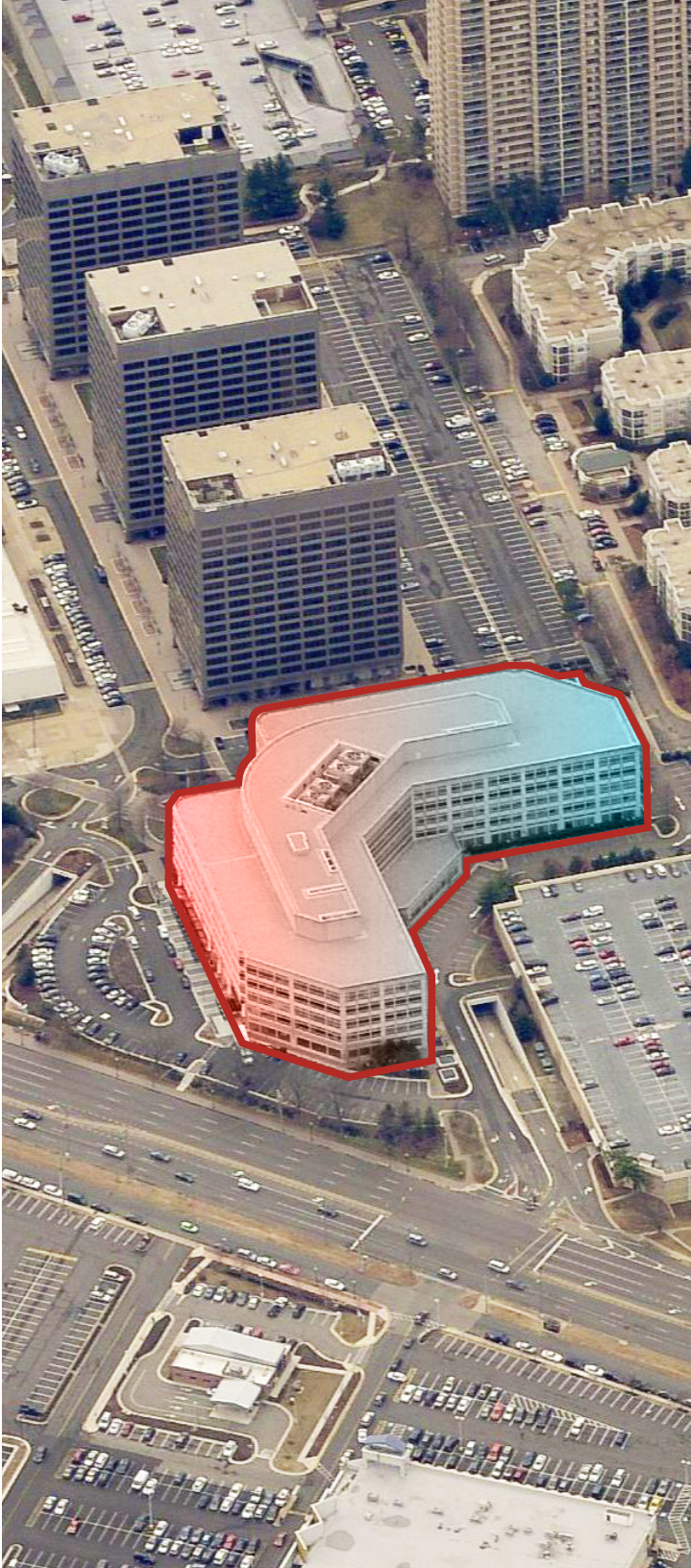
50,017 VPD

30,216 VPD

S GEORGE MASON DRIVE







FOR LEASE

# SKYLINE SKY 7

5275 LEESBURG PIKE, FALLS CHURCH, VA

## CONTACT US

### LANCE LJ MARINE

Senior Vice President  
+1 703 905 0331  
[lance.marine@cbre.com](mailto:lance.marine@cbre.com)

### MICHAEL ZACHARIA

Executive Vice President  
+1 703 905 0268  
[michael.zacharia@cbre.com](mailto:michael.zacharia@cbre.com)

© 2020 CBRE, Inc. All rights reserved. This information has been obtained from sources believed reliable, but has not been verified for accuracy or completeness. You should conduct a careful, independent investigation of the property and verify all information. Any reliance on this information is solely at your own risk. CBRE and the CBRE logo are service marks of CBRE, Inc. All other marks displayed on this document are the property of their respective owners, and the use of such logos does not imply any affiliation with or endorsement of CBRE. Photos herein are the property of their respective owners. Use of these images without the express written consent of the owner is prohibited.

**CBRE**