

2177 THIRD

2177 Third Street
San Francisco, CA



Retail Space For Lease

CBRE



GOLDEN STATE OF MIND

The Chase Center will be home to the NBA's Golden State Warriors in 2019 – and a beacon of top-tier entertainment and retail. Find yourself in the center of the City's most exciting cultural and lifestyle offerings, all located just two blocks away from home.

SAN FRANCISCO'S NEWEST PLACE TO PLAY

Steps from your doorway will be the newly reimagined Crane Cove Park, opening in 2019. With a scenic beach and water access, Crane Cove will become the next iconic San Francisco park.

2177 THIRD

REDEFINING URBAN SANCTUARY

From renowned restaurants, galleries, and retail to pioneering biotech and healthcare, the sunny, tranquil Dogpatch is a neighborhood on the rise. Accessible to Caltrain and the Muni Light Rail, 2177 Third will provide unparalleled convenience.

UNLIKE
ANYTHING ELSE
IN DOGPATCH

Meticulous attention to detail meets dramatic design at 2177 Third, rising at San Francisco's waterfront in the heart of Dogpatch. From the serenity of its perfectly landscaped courtyards to the quintessential San Francisco views, 2177 Third provides a boutique offering of residences defined by elegant finishes and amenities paired with exceptional service.



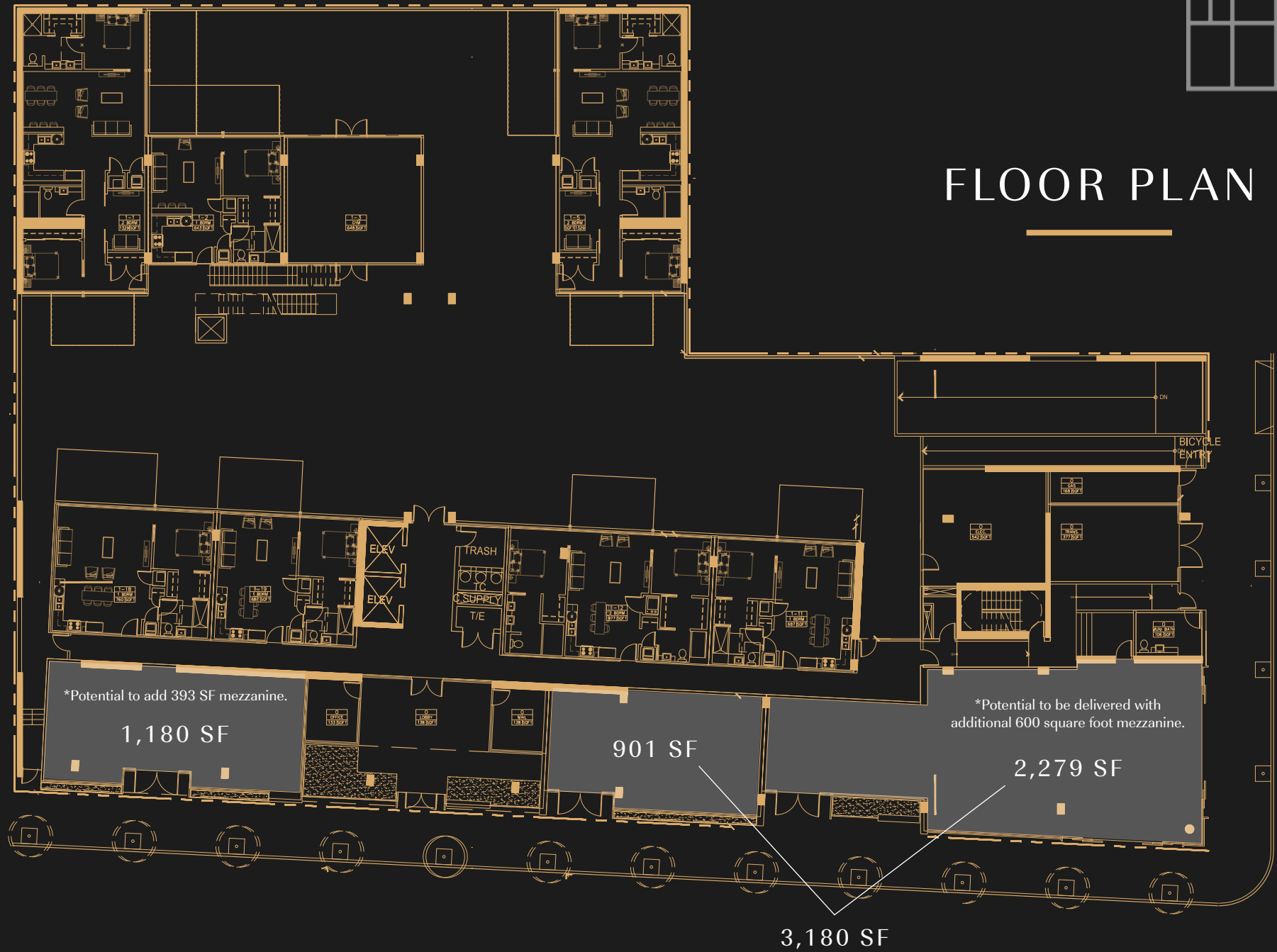
FEATURES

- Ground floor retail at 2177 Third Street – a boutique
- 114-unit condominium building
- Type 1 venting available for a restaurant
- Steps from Chase Center, the new Golden State Warriors arena and Uber's headquarters
- Adjacent to the Pier 70 development, home to the offices of Restoration Hardware, Otto, Gusto, and JUUL Labs
- Nearby amenities include: Ungrafted, The Pearl, Magnolia Brewing, Piccino, and Triple Voodoo Brewery





FLOOR PLAN



AREA OVERVIEW

2177 THIRD



MULTIFAMILY DEVELOPMENT

Dogpatch has witnessed an unprecedented housing boom over the last five years:

- B** Over 800 units built since 2014
- U/C** Over 1,000 units under construction
- A/P** Almost 3,000 units approved/planned

TRANSPORTATION

2177 Third is directly across the street from Muni's Third Street Light Rail and a 10-minute walk to the 22nd Street Caltrain Station with additional public transportation access to San Francisco and California within walking distance.

SPENDING POWER

With an average household income of over \$214,000, Dogpatch ranks as San Francisco's third wealthiest neighborhood, behind only Saint Francis Woods and Seacliff and well above the San Francisco average of \$131,000.



2177 THIRD

CONTACT INFORMATION

ALEX SAGUES

Lic. 02055525

+1 415 717 3510

alex.sagues@cbre.com

LAURA SAGUES

Lic. 01888298

+1 415 772 0122

laura.sagues@cbre.com

© 2019 CBRE, Inc. All rights reserved. This information has been obtained from sources believed reliable, but has not been verified for accuracy or completeness. You should conduct a careful, independent investigation of the property and verify all information. Any reliance on this information is solely at your own risk. CBRE and the CBRE logo are service marks of CBRE, Inc. All other marks displayed on this document are the property of their respective owners. Photos herein are the property of their respective owners. Use of these images without the express written consent of the owner is prohibited.

CBRE, Inc. | 415 Mission Street | 46th Floor | San Francisco, CA 94105

CBRE