

SAN FRANCISCO, CA



# HENRY 2 ADAMS

SHOWPLACE RETAIL IN SAN FRANCISCO'S DESIGN DISTRICT

**CBRE**



# FEATURES

Beautiful brick and timber building with strong frontage.

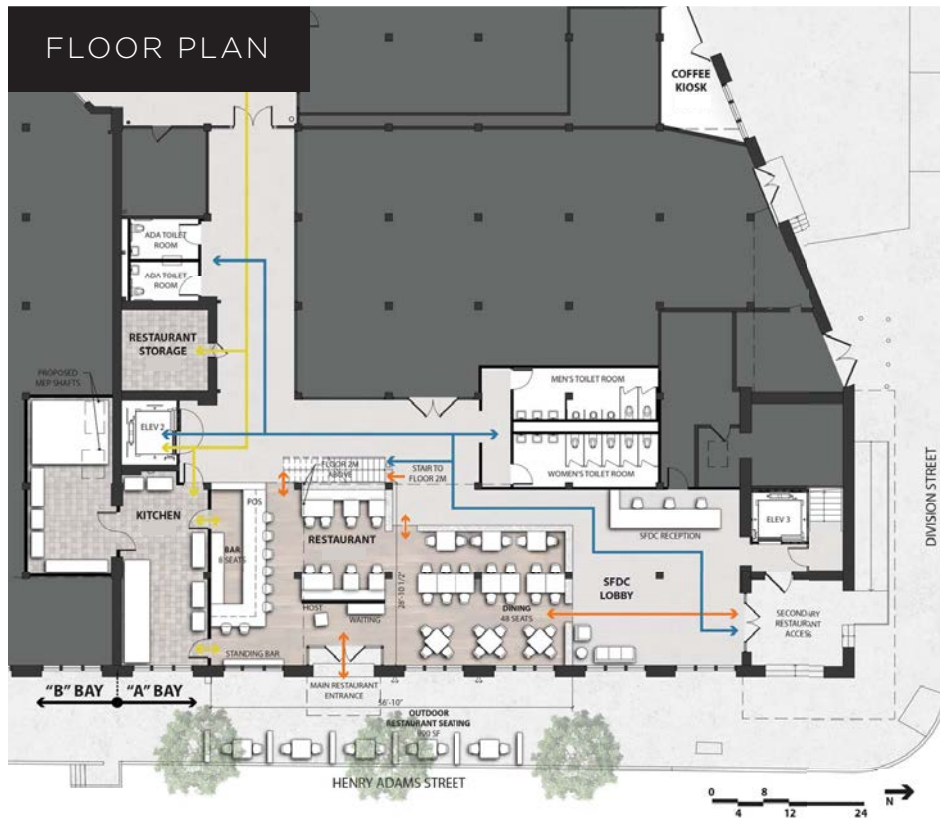
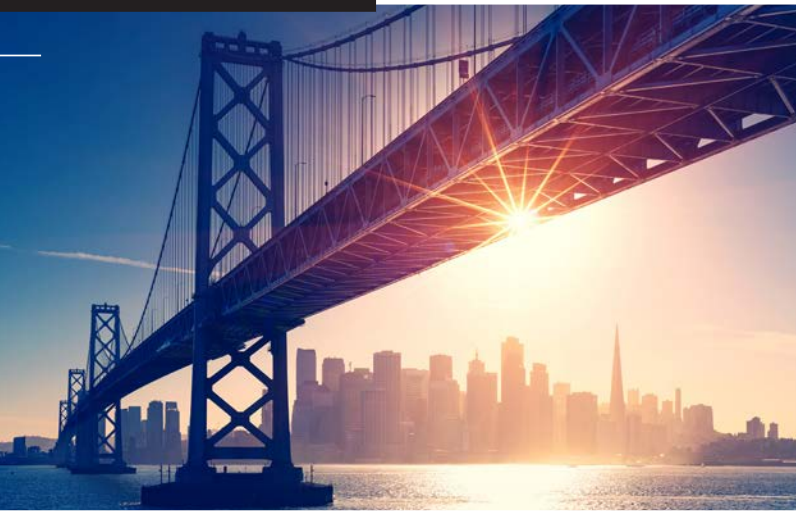
Future lobby and exterior renovation.

Daytime population in the immediate area includes Airbnb, Adobe, Zynga and more.

Nearby retailers include The Grove, Restoration Hardware, Bellota, Omakase, REI, Trader Joe's and the SF Design Center.







# THE SPACE

Two retail suites available at the base of the iconic Showplace in the Design District

- **RESTAURANT**  
+/- 3,160 SF second generation restaurant with dedicated outdoor seating

## LEVEL 1

Dining: 1,455 SF      Kitchen: 785 SF  
Outdoor Dining: 900 SF      Storage: 170 SF

## LEVEL 2M

Dining: 750 SF

- **KIOSK**  
+/- 152 SF non-vented kiosk space with roll-up window ideal for coffee or food use





## THE AREA

- Over 1,300 new apartment units in a .5 mile radius since 2013 with an additional 6,900 in a 1 mile radius since 2013 (8,200+ total).
- Over 1,100 new apartment units proposed / under construction in a .5 mile radius with an additional 4,600 units in a 1 mile radius (5,700+ total).
- Less than a mile to 4th & King Caltrain station.
- Easy access to I80, I280 and Highway 101.



CORPORATE NEIGHBORS

1

Adobe

2

Airbnb

3

IRhythm/Zynga

4

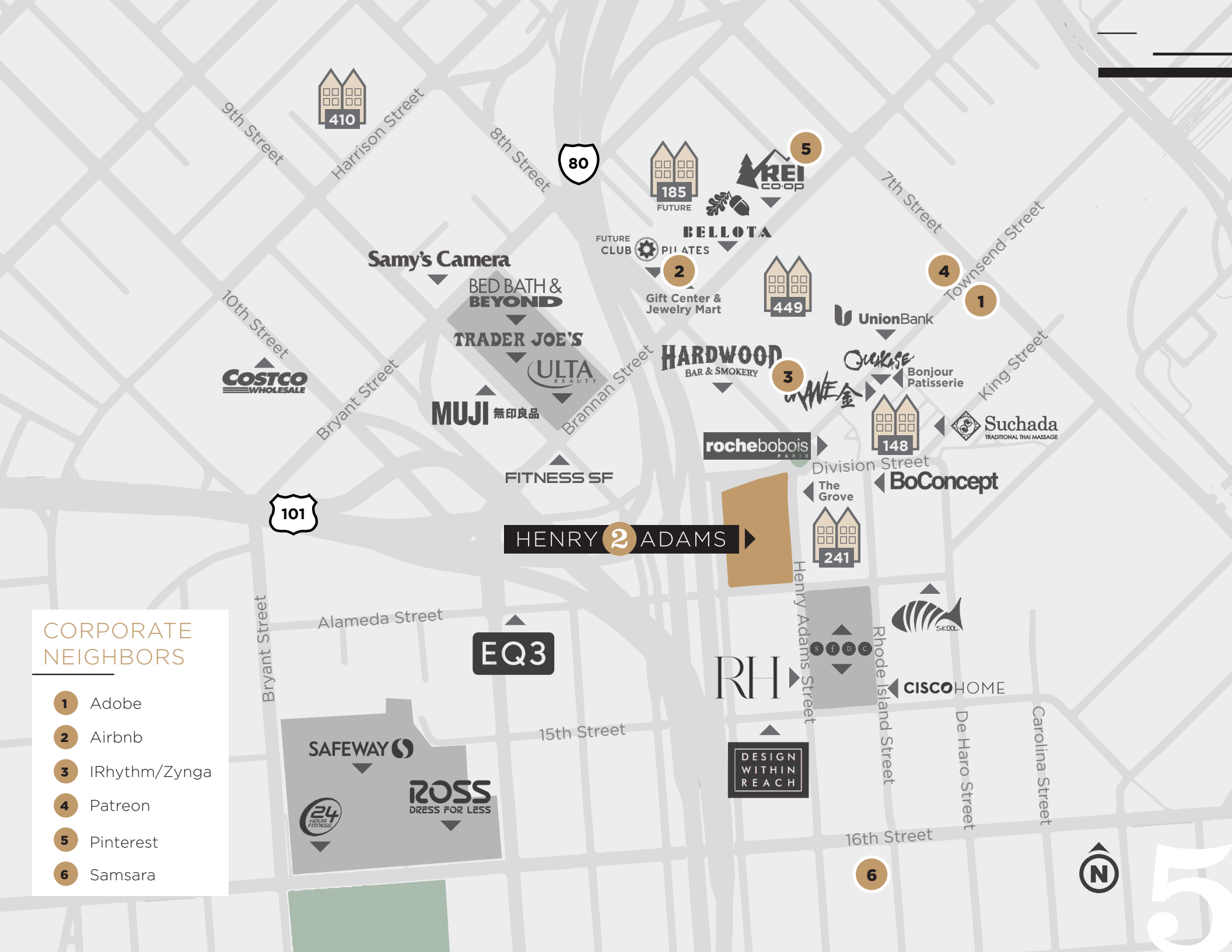
Patreon

5

Pinterest

6

Samsara





# HENRY 2 ADAMS

## LEASING CONTACTS

**HOLLIE BRIED SIMUNOVIC**

Lic. 02035295

T +1 415 772 0155

C +1 858 204 7555

[hollie.bried@cbre.com](mailto:hollie.bried@cbre.com)

**LAURA SAGUES BARR**

Lic. 01888298

T +1 415 772 0122

[laura.sagues@cbre.com](mailto:laura.sagues@cbre.com)

© 2020 CBRE, Inc. All rights reserved. This information has been obtained from sources believed reliable, but has not been verified for accuracy or completeness. You should conduct a careful, independent investigation of the property and verify all information. Any reliance on this information is solely at your own risk. CBRE and the CBRE logo are service marks of CBRE, Inc. All other marks displayed on this document are the property of their respective owners. Photos herein are the property of their respective owners. Use of these images without the express written consent of the owner is prohibited.

**CBRE**