

500
WASHINGTON

SAN FRANCISCO, CA

RETAIL SPACE
FOR LEASE



CBRE

> PROPERTY FEATURES



±2,354 SF GROUND
±970 SF MEZZANINE
RETAIL OPPORTUNITY
IN A ±100,911 RSF,
CLASS A OFFICE
BUILDING



ON THE BORDER OF
JACKSON SQUARE &
NORTH FINANCIAL
DISTRICT



NEIGHBORING
RETAILERS INCLUDE:
SHINOLA, AESOP,
ISABEL MARANT, AND
ALLBIRDS



NEIGHBORING
RESTAURANTS
INCLUDE: KUSAKABE,
KOKKARI ESTIATORIO,
5A5 STEAK LOUNGE,
QUINCE, COTOGNA,
AND BIX



WALKING
DISTANCE TO THE
EMBARCADERO,
NORTH BEACH,
CHINATOWN,
UNION SQUARE,
AND SOMA

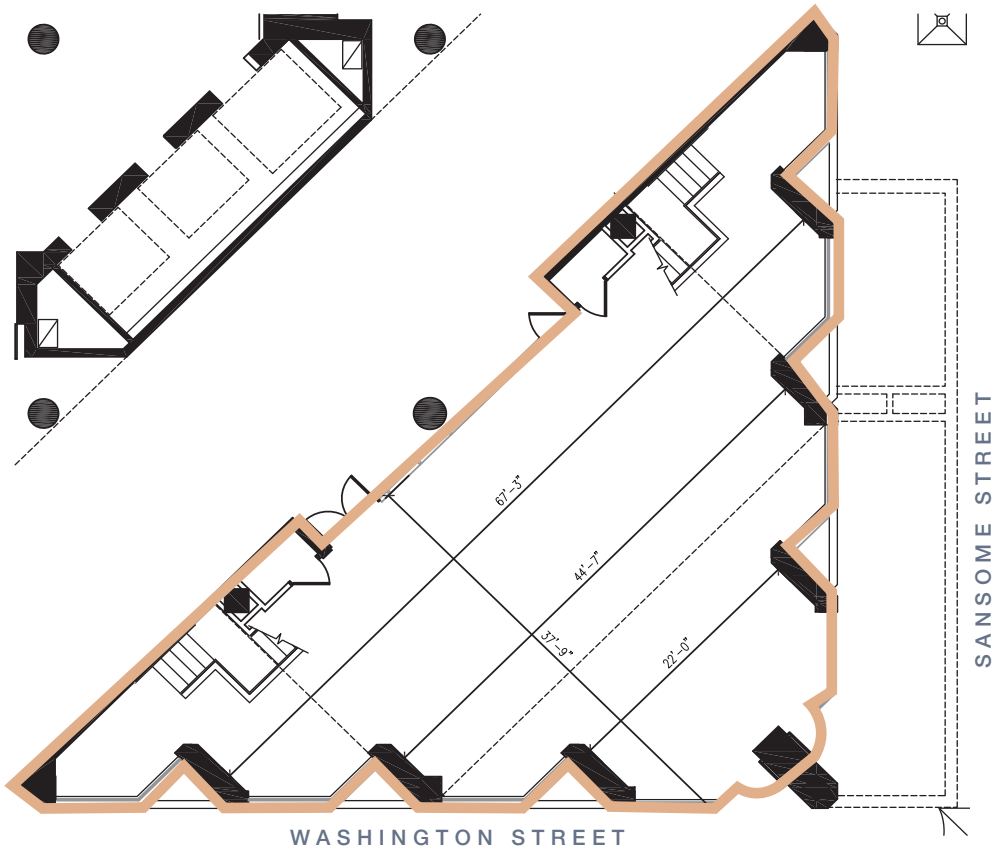


BIKE PARKING
IN BUILDING

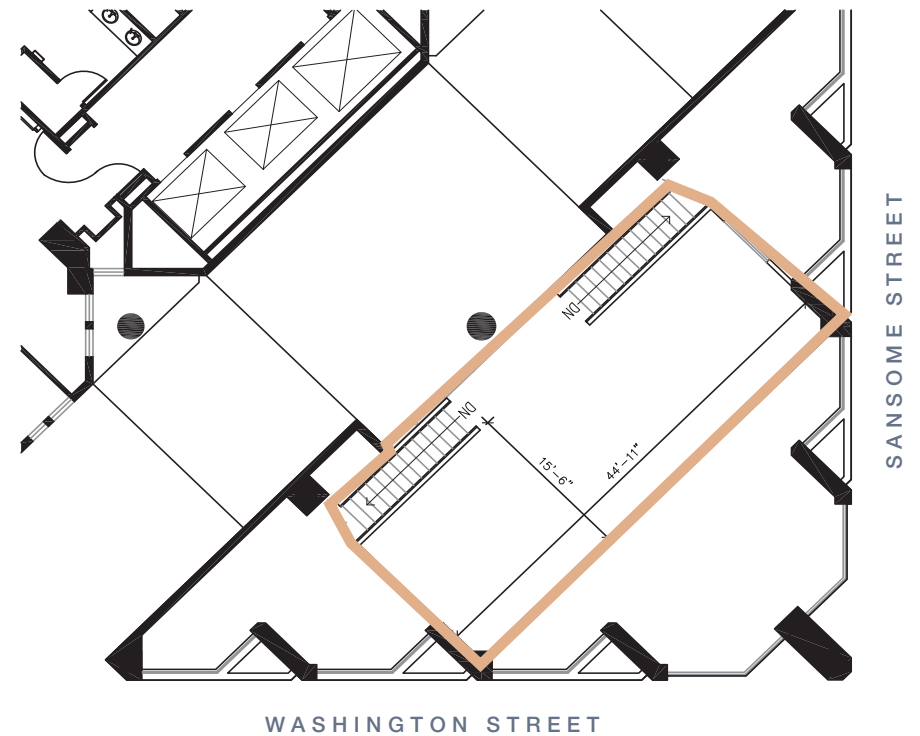


> FLOOR PLANS

GROUND FLOOR | 2,354 RSF



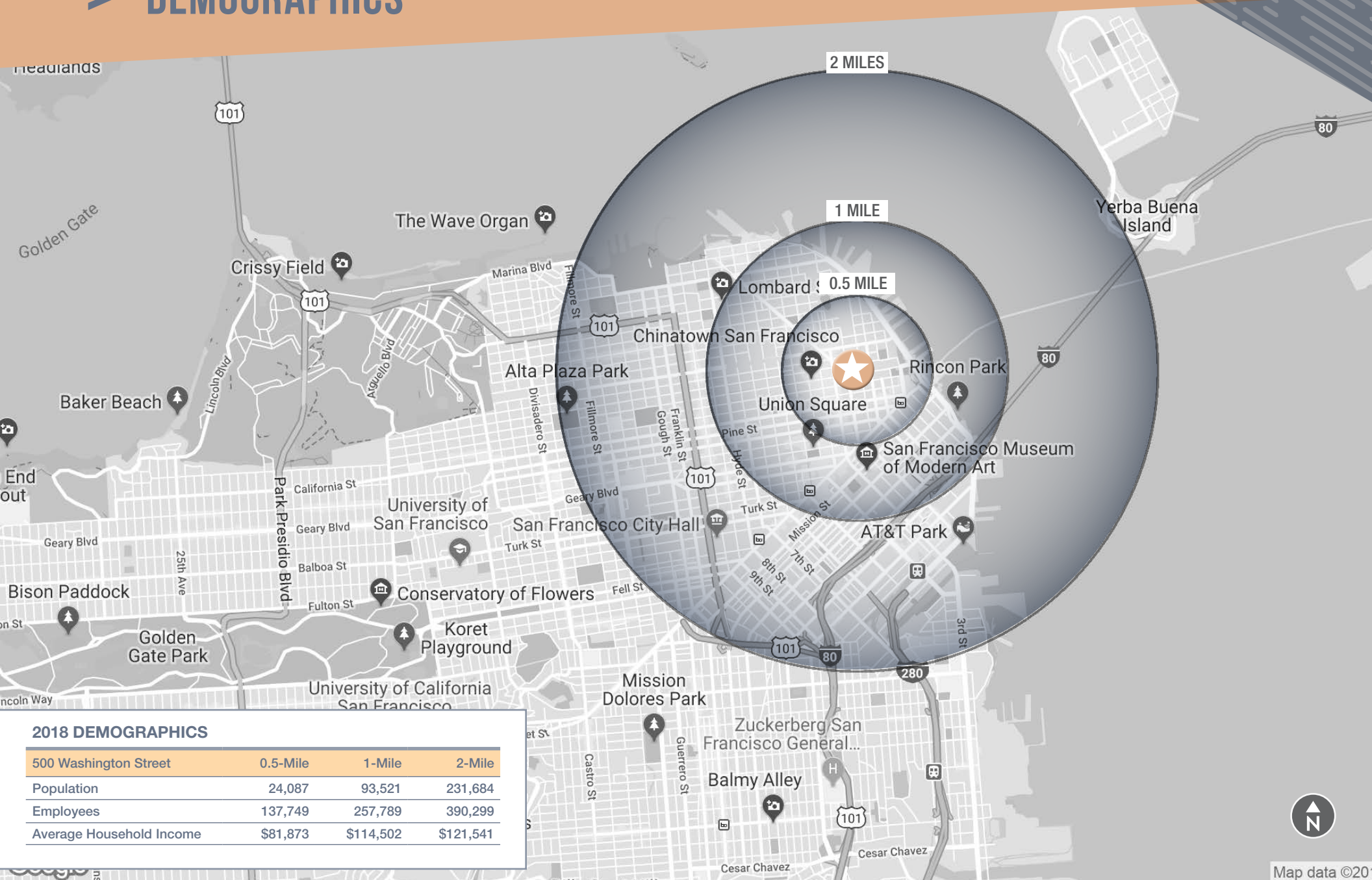
MEZZANINE FLOOR | 970 RSF



> AREA RETAILERS



> DEMOGRAPHICS



500

WASHINGTON

SAN FRANCISCO, CA

RETAIL SPACE
FOR LEASE

FOR MORE LEASING INFORMATION, CONTACT:

JESSICA BIRMINGHAM

First Vice President

Lic. 01447532

+1 415 772 0199

jessica.birmingham@cbre.com

MEAGHAN HALEY

Associate

Lic. 01889217

+1 415 772 0202

meaghan.haley@cbre.com

CBRE, INC.

415 Mission Street

Suite 4600

San Francisco, CA 94105

www/cbre/sanfrancisco

CBRE