

73

# NEWBURY

Boston, Massachusetts

RETAIL SPACE  
FOR LEASE



  
**COPLEY**  
INVESTMENTS

**CBRE**



1,800 SF  
RETAIL SUITE  
AVAILABLE

## THE OPPORTUNITY

73 Newbury Street is located in one of Boston's most sought-after retail destinations.

This incredible opportunity is on the sunny side of Newbury Street across from Restoration Hardware's 40,000 SF Boston flagship store and steps from the Arlington MBTA Green line station. The north side of the "A-B Block" of Newbury Street is where luxury and aspirational retail meet to form one of the city's strongest tenant lineups. 73 Newbury is flanked in both directions by retailers such as Vince, UGG, Max Mara, Warby Parker, and Ralph Lauren's Boston flagship store. The large bay windows are a highlight of this walk-up retail space and its prominent street presence. 73 Newbury Street is owned by a well-respected local owner who sits just steps from this iconic asset.

Be part of Newbury Street as it celebrates the past and we look to the future.





LONGCHAMP PARIS

joie

VERONICA BEARD  
(COMING SOON)

rag & bone  
NEW YORK

LIVELY

LE LABO®

Barbour UGG  
australia

INDOCHINO  
CUSTOM MENSWEAR

RALPH LAUREN

WARBY PARKER

VINCE.

MaxMara

VALENTINO

SHREVE, CRUMP & LOW

MiniLuxe

TIFFANY & Co.

COLE HAAN

SIMON PEARCE

73

BOSTON  
PUBLIC  
GARDEN

DARTMOUTH STREET

NEWBURY STREET

CLARENDON STREET

BOYLSTON STREET

BERKELEY STREET

ARLINGTON STREET

LUSH FRESH  
HANDMADE  
COSMETICS

marine layer

COS

ALLSAINTS

TALBOTS

SOULCYCLE

Kiehl's  
SINCE 1851

CUYANA

NORDSTROM

rack

sunglass hut

SEPHORA

ATHLETA

H&M

RH  
RESTORATION HARDWARE

Van Cleef & Arpels

Cartier

CONCEPTS

BVLGARI

CHANEL

BURBERRY

# Neighboring Retail



# Highlights

- 1,800 SF retail suite available on Newbury Street's most desirable block
- Prominent window frontage and branding opportunity
- Located in the Back Bay, Boston's most iconic shopping destination, with 12 million annual visitors to Newbury Street
- Neighboring retailers include Barbour, Concepts, Max Mara, Ralph Lauren, Restoration Hardware, UGG, Vince and Warby Parker

## DEMOGRAPHICS

WITHIN ONE MILE



RESIDENTIAL  
POPULATION

91,043



AVERAGE HOUSEHOLD  
INCOME

\$145,129



NUMBER OF  
HOUSEHOLDS

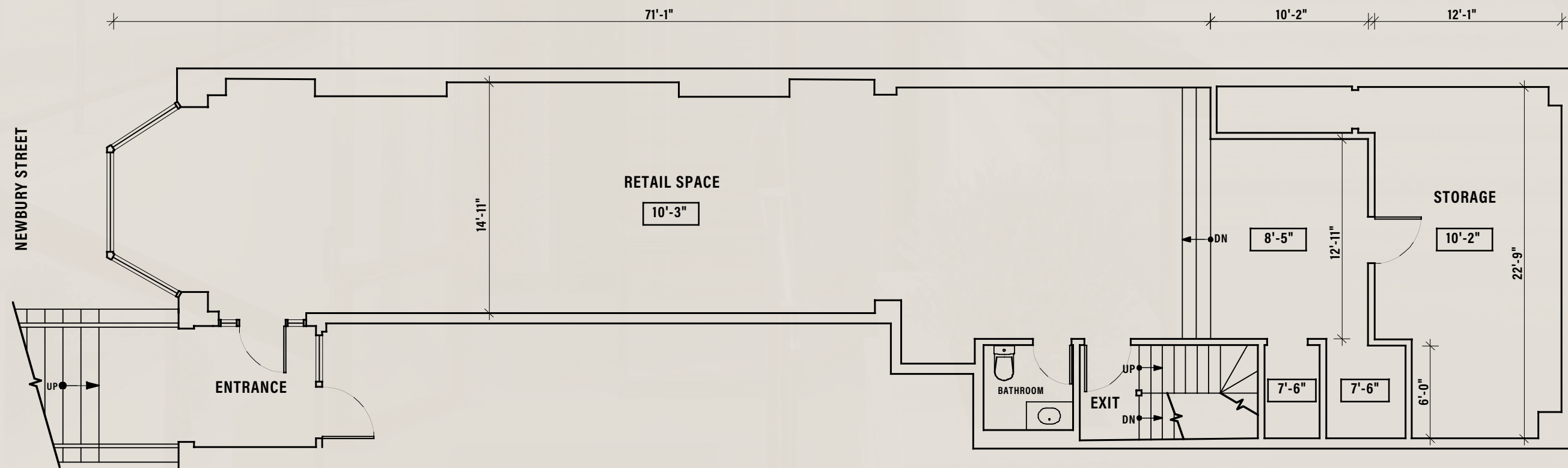
47,554



DAYTIME  
POPULATION

285,474

## FLOOR PLAN







---

## FOR MORE INFORMATION

---

**MATTHEW CURTIN**

Senior Vice President

+1 617 912 6861

[matthew.curtin2@cbre.com](mailto:matthew.curtin2@cbre.com)

**NICOLE NIELSEN**

Senior Associate

+1 617 912 6879

[nicole.nielsen@cbre.com](mailto:nicole.nielsen@cbre.com)

© 2020 CBRE, Inc. All rights reserved. This information has been obtained from sources believed reliable, but has not been verified for accuracy or completeness. You should conduct a careful, independent investigation of the property and verify all information. Any reliance on this information is solely at your own risk.

CBRE and the CBRE logo are service marks of CBRE, Inc. All other marks displayed on this document are the property of their respective owners. Photos herein are the property of their respective owners. Use of these images without the express written consent of the owner is prohibited.

  
**COPLEY**  
INVESTMENTS

**CBRE**