

FOR SALE OR LEASE

Evergreen Park - Former US Bank

2,686 SF BUILDING ON 0.43 ACRES
2917 W 95TH ST, EVERGREEN PARK, IL 60805

RETAIL



FEATURES

- +Freestanding Building with Drive-Thru
- +Excellent Visibility Sitting on Busy 95th St

+Regional Retail Corridor with Over 1M SF of Retail

+Dense Population base with over 218,000 people within 3 miles

+High daytime population directly across the street from Little Company of Mary Hospital

EXCLUSIVE AGENTS

Sean McCourt

Vice President
+1 312 297 7688
sean.mccourt@cbre.com

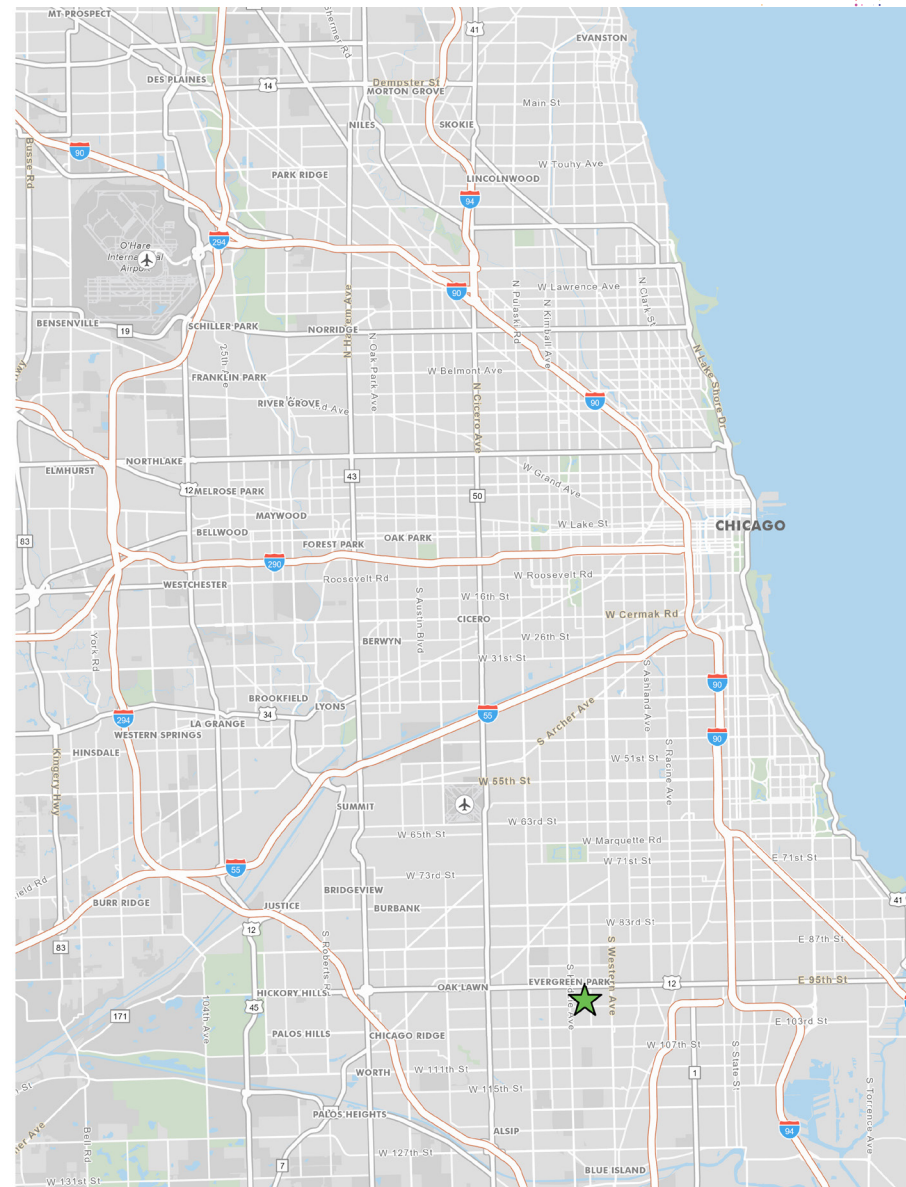
Joe Parrott, CRRP, CRX, CLS

Senior Vice President
+1 312 297 7680
joe.parrott@cbre.com

FOR SALE OR LEASE

Evergreen Park - Former US Bank

RETAIL



FOR SALE OR LEASE

Evergreen Park - Former US Bank

2,686 SF BUILDING ON 0.43 ACRES
2917 W 95TH ST, EVERGREEN PARK, IL 60805

RETAIL



BUILDING AREA

+2,686 SF

LAND AREA

+0.43 acres

PARKING INFORMATION

+18 Regular Parking Spaces

+1 Handicap space

= 19 Total Parking Spaces

ZONING INFORMATION

C - Commercial District

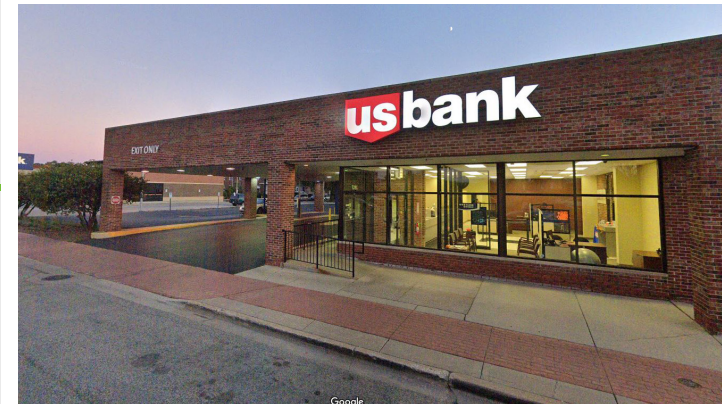
FOR SALE OR LEASE

Evergreen Park - Former US Bank

2,686 SF BUILDING ON 0.43 ACRES
2917 W 95TH ST, EVERGREEN PARK, IL 60805

RETAIL

	1 MILE	2 MILES	3 MILES
POPULATION			
2019 Population - Current Year Estimate	18,972	87,984	218,650
2024 Population - Five Year Projection	18,593	86,533	215,340
2010 Population - Census	19,722	90,653	223,809
2000 Population - Census	20,940	95,049	235,374
2010-2019 Annual Population Growth Rate	-0.42%	-0.32%	-0.25%
2019-2024 Annual Population Growth Rate	-0.40%	-0.33%	-0.30%
HOUSEHOLDS			
2019 Households - Current Year Estimate	6,859	32,372	78,384
2024 Households - Five Year Projection	6,721	31,830	77,156
2010 Households - Census	7,111	33,241	80,180
2000 Households - Census	7,583	34,359	82,658
2010-2019 Annual Household Growth Rate	-0.39%	-0.29%	-0.24%
2019-2024 Annual Household Growth Rate	-0.41%	-0.34%	-0.32%
2019 Average Household Size	2.75	2.67	2.76
HOUSEHOLD INCOME			
2019 Average Household Income	\$103,545	\$97,143	\$81,289
2024 Average Household Income	\$118,530	\$110,065	\$92,803
2019 Median Household Income	\$81,253	\$78,289	\$62,222
2024 Median Household Income	\$92,286	\$86,470	\$70,959
2019 Per Capita Income	\$37,341	\$35,870	\$29,220
2024 Per Capita Income	\$42,748	\$40,622	\$33,334
HOUSING UNITS			
2019 Housing Units	7,478	35,272	86,587
2019 Vacant Housing Units	619 8.3%	2,900 8.2%	8,203 9.5%
2019 Occupied Housing Units	6,859 91.7%	32,372 91.8%	78,384 90.5%
2019 Owner Occupied Housing Units	5,921 79.2%	25,735 73.0%	56,863 65.7%
2019 Renter Occupied Housing Units	938 12.5%	6,637 18.8%	21,521 24.9%
EDUCATION			
2019 Population 25 and Over	13,208	61,697	151,059
HS and Associates Degrees	7,116 53.9%	34,141 55.3%	91,134 60.3%
Bachelor's Degree or Higher	5,254 39.8%	23,108 37.5%	44,225 29.3%
PLACE OF WORK			
2019 Businesses	670	2,027	4,482
2019 Employees	9,807	26,737	54,452



© 2020 CBRE, Inc. All rights reserved. This information has been obtained from sources believed reliable, but has not been verified for accuracy or completeness. You should conduct a careful, independent investigation of the property and verify all information. Any reliance on this information is solely at your own risk. CBRE and the CBRE logo are service marks of CBRE, Inc. All other marks displayed on this document are the property of their respective owners. Photos herein are the property of their respective owners. Use of these images without the express written consent of the owner is prohibited.

www.cbre.us/2917Evergreen

CBRE