

AVAILABLE FOR SALE  
4,500 SF ON 0.63 AC

# FORMER REGIONS BANK

9994 Manchester Rd, St. Louis, MO

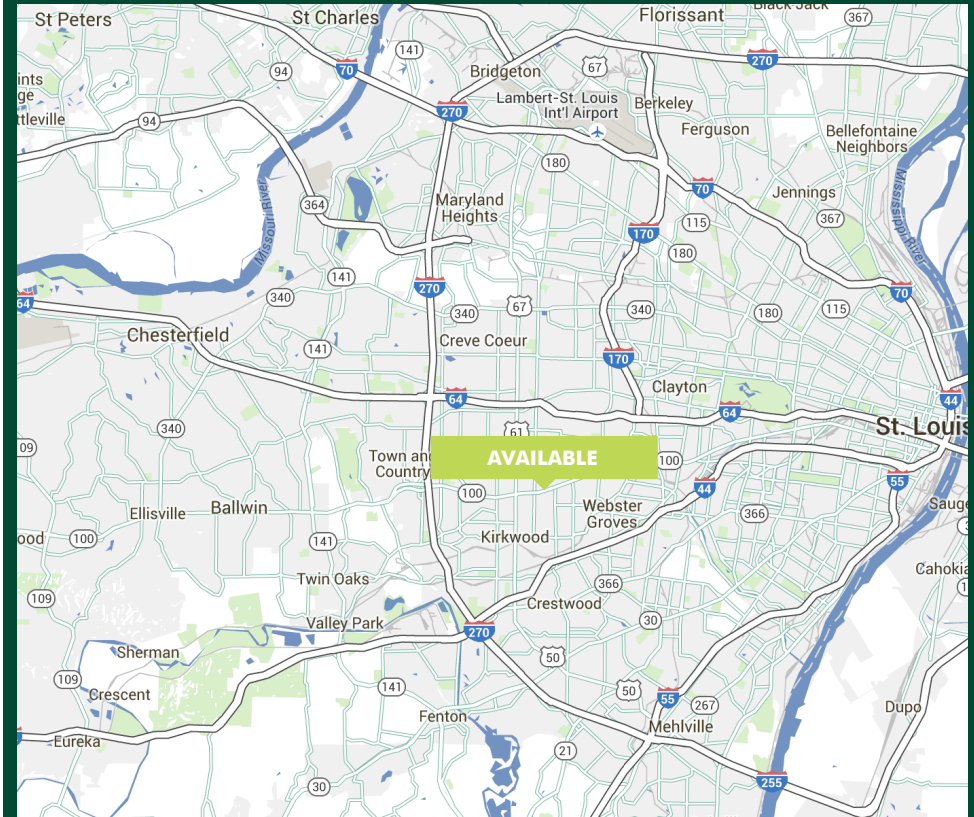




## PROPERTY INFO

- + 4,500 SF (3 Levels)
  - 1,912 SF +/- First Floor
  - 1,912 SF +/- Below Ground
  - 675 SF +/- Mezzanine
- + 3 drive-thru lanes
- + 0.63 AC Site
- + 17 parking spaces +/-

**CONTACT BROKER FOR PRICING**



## PLEASE CONTACT:

**NICK GARAVAGLIA**

+1 314 655 5827

[nick.garavaglia@cbre.com](mailto:nick.garavaglia@cbre.com)

**ALLISON BUJEWSKI**

+1 314 655 5832

[allison.bujewski@cbre.com](mailto:allison.bujewski@cbre.com)

**GRACIE WINKELMANN**

+1 314 655 5922

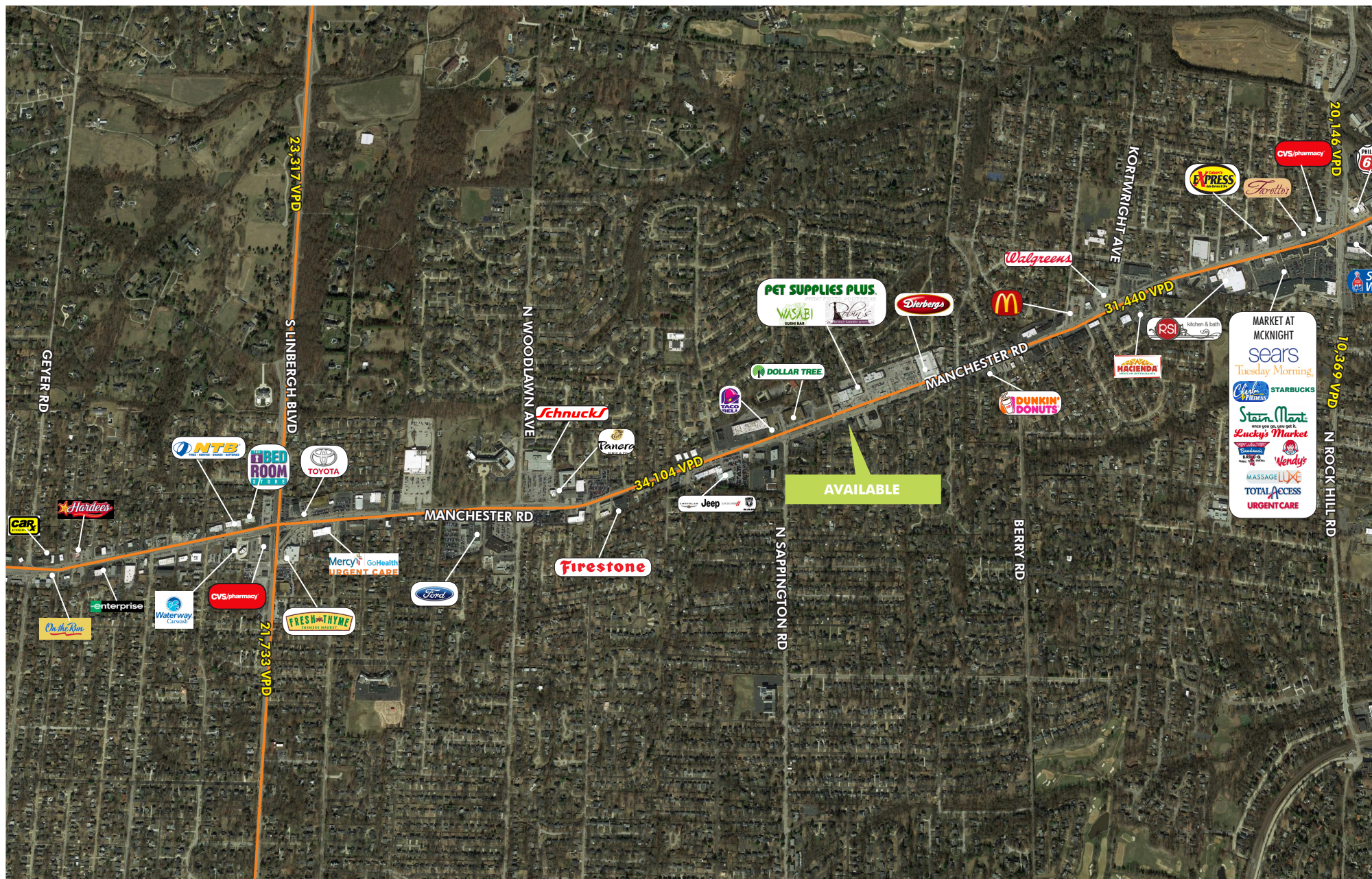
[gracie.winkelman@cbre.com](mailto:gracie.winkelman@cbre.com)

## AREA DEMOGRAPHICS

	1MILE	3 MILES	5 MILES
Population	11,410	79,852	224,665
Average Household Income	\$128,170	\$117,354	\$108,081
Median Household Income	\$91,628	\$81,004	\$73,067
Households	4,582	33,772	98,389



# TRADE AREA



© 2019 CBRE, Inc. All rights reserved. This information has been obtained from sources believed reliable, but has not been verified for accuracy or completeness. You should conduct a careful, independent investigation of the property and verify all information. Any reliance on this information is solely at your own risk. CBRE and the CBRE logo are service marks of CBRE, Inc. All other marks displayed on this document are the property of their respective owners, and the use of such logos does not imply any affiliation with or endorsement of CBRE. Photos herein are the property of their respective owners. Use of these images without the express written consent of the owner is prohibited.



SITE AERIAL

