



FOURTH STREET *Live!*

SPACE AVAILABLE RANGING FROM $\pm 2,865$ SQ. FT. TO $\pm 19,373$ SQ. FT.



44

IT'S THE HEARTBEAT OF LOUISVILLE IN THE HEART OF THE CITY

· THE CORDISH COMPANIES

A short walk from historic downtown hotels, the Kentucky International Convention Center, Waterfront Park, and much more, Fourth Street Live! is Louisville's premier dining and entertainment destination. Be a part of the excitement in one of our prime availabilities. With high daytime employment and exciting nightlife, enjoy the epicenter of Louisville's downtown any time of the day.



Located within the number one attraction in Louisville



Immediately adjacent to the Kentucky International Convention Center, Louisville's finest hotels and dining and within walking distance of KFC Yum! Center Arena, Louisville Palace & Mercury Ballroom



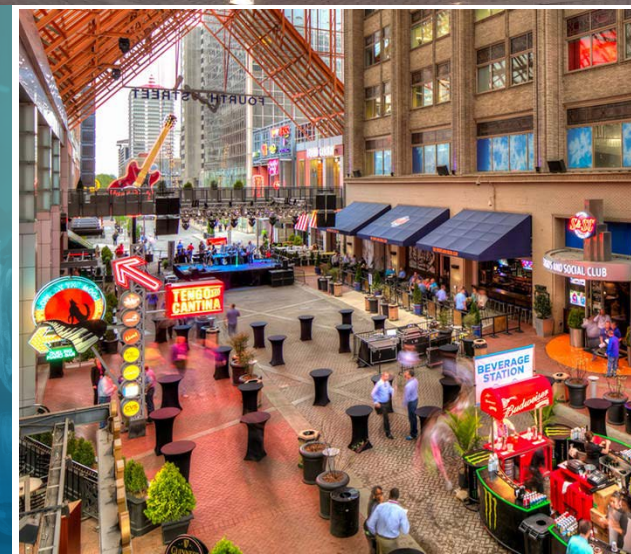
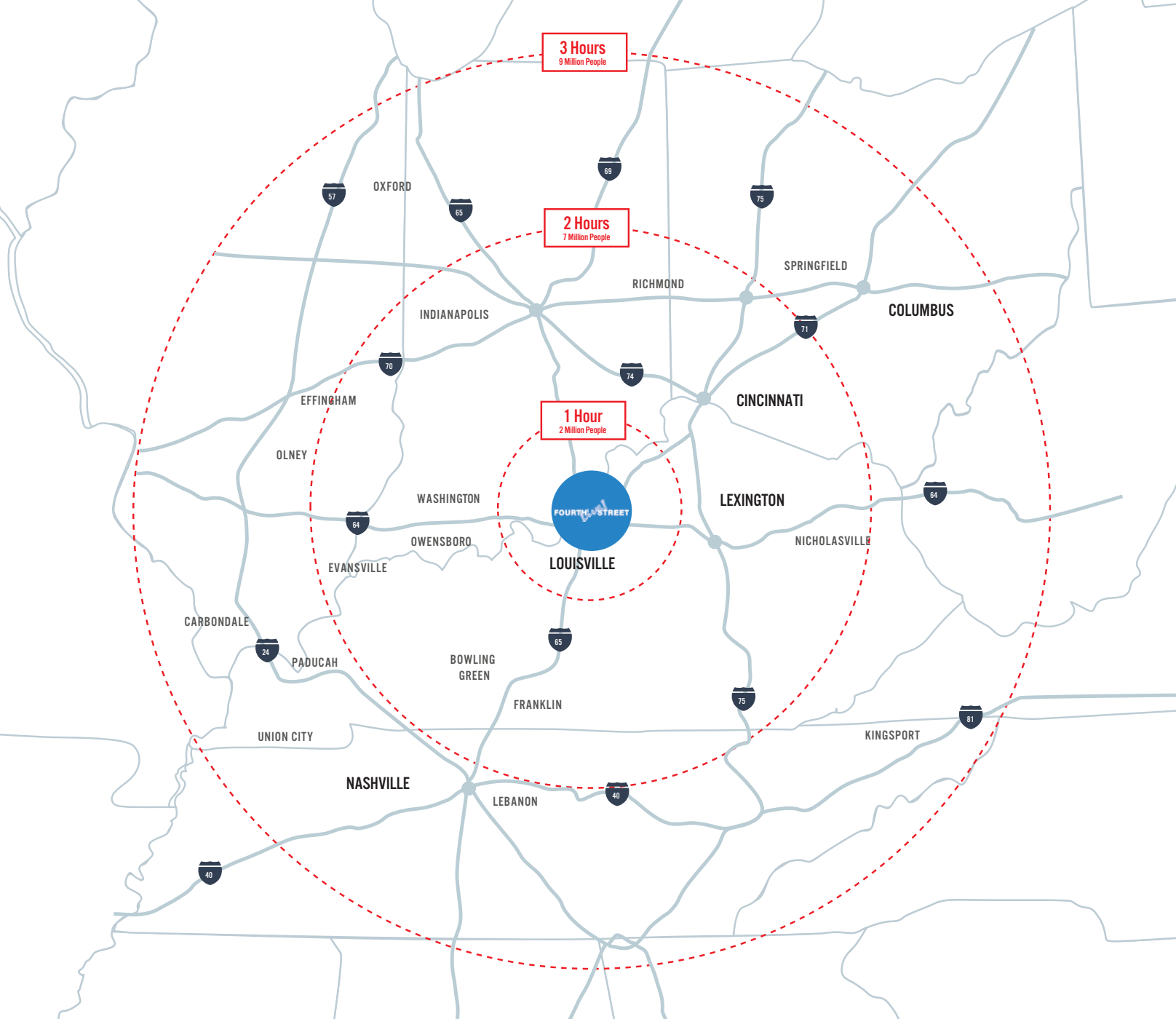
Connected by pedway to the Galleria garage and located within one block of over 5,000 parking spaces



Over 105,000 daytime employees within one mile



Over 6,000 hotel rooms in Downtown Louisville

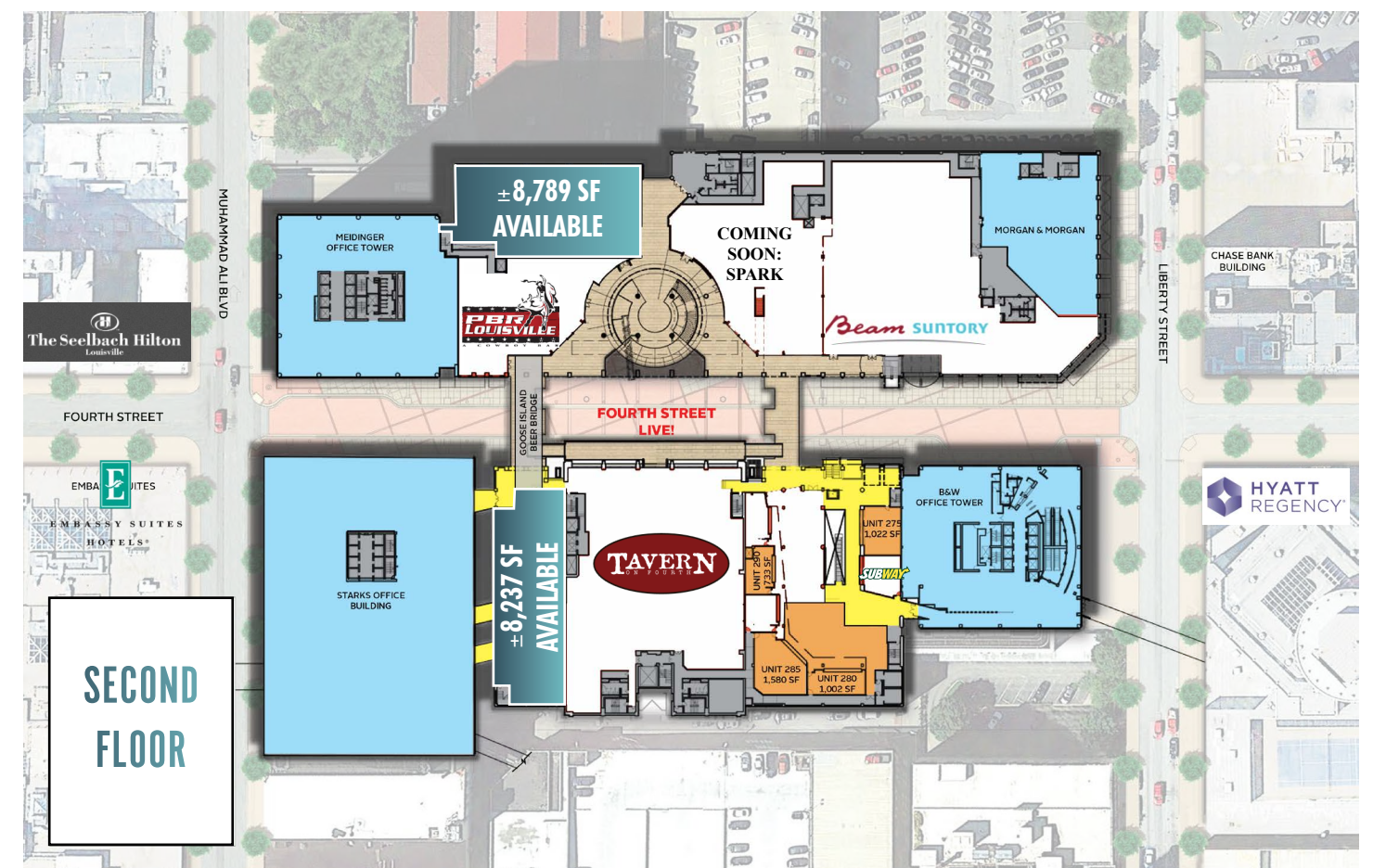


CITY OF LOUISVILLE		FOURTH STREET LIVE!	
16.4M ANNUAL VISITORS	60K COLLEGE/UNIVERSITY STUDENTS	12M RESIDENTS WITHIN 20 MINUTES	2M RESIDENTS WITHIN 1 HOUR
25K METRO HOTEL ROOMS	13M SQUARE FEET OF CONVENTION SPACE	7M RESIDENTS WITHIN 2 HOURS	9M RESIDENTS WITHIN 3 HOURS





FLOOR PLANS



FOURTH STREET *Live!*

FOR MORE INFORMATION CONTACT

Robert Schwartz

Senior Vice President

+1 502 412 7606

robert.schwartz@cbre.com

Clay Hunt

Vice President

+1 502 412 7607

clay.hunt@cbre.com

© 2020 CBRE, Inc. All rights reserved. This information has been obtained from sources believed reliable, but has not been verified for accuracy or completeness. You should conduct a careful, independent investigation of the property and verify all information. Any reliance on this information is solely at your own risk. CBRE and the CBRE logo are service marks of CBRE, Inc. All other marks displayed on this document are the property of their respective owners, and the use of such logos does not imply any affiliation with or endorsement of CBRE. Photos herein are the property of their respective owners. Use of these images without the express written consent of the owner is prohibited. PMS_October2019

